

Typological Transformations in a Same Shape

Teresa Leite, Ana Elísia Costa e Eliane Constantinou - UFRGS – Brazil

Research Group: Domestic Spaces – Multiple Dimensions

CASA CONTEMPORÂNEA BRASILEIRA

PESQUISA UFRGS UFPB UFPeI UEG UCS

HOME

BANCO DE DADOS [A-L]

BANCO DE DADOS [M-Y]

PRODUÇÃO

GRUPO DE PESQUISA

EQUIPE DE PESQUISA

CONTATO



A PESQUISA

BREVE APRESENTAÇÃO

Esta pesquisa tem como **tema** a habitação contemporânea brasileira e como **objeto de estudo**, projetos de habitação unifamiliar desenvolvidos por 25 arquitetos ou escritórios eleitos em 2010 como a “nova geração de arquitetos brasileiros” pela revista AU-Arquitetura e Urbanismo (Editora PINI). Acesse [aqui](#) a reportagem completa.

A análise da produção destes arquitetos permite questionar a seleção indicada e estabelecer um posicionamento crítico sobre a atual produção brasileira no que tange a habitações unifamiliares.

Pretende-se construir, por amostragem, um quadro que ilustre “a casa contemporânea brasileira”, identificando, através da análise gráfica e textual, regras e transgressões tipológicas.

Pesquisar

ARQUIVOS

[agosto 2014](#)

<https://www.ufrgs.br/casacontemporanea/>

GRUPO SP

NITSCHÉ ARQUITETOS ASSOCIADOS

UNA ARQUITETOS

BERNARDES JACOBSEN ARQUITETURA

SPBR

ARQUITETOS ASSOCIADOS

CARLA JUAÇABA

BCMF

DDG ARQUITETURA

TACOA

O NORTE OFICINA DE CRIAÇÃO

MAPA ARQUITETURA

AUM ARQUITETOS

ESTUDIO AMÉRICA

YURI VITAL

SIAA

FGMF

METRO ARQUITETOS ASSOCIADOS

GRUPO SP

ESTUDIO AMÉRICA

GRUPO SP

House in Luanda
2010, Luanda, Angola



Habitação Social
2011, Brasília



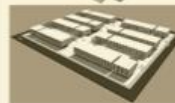
Habitação Social no Amazonas
2005, Manaus



Caixa, Habitação Social no Brasil
2004, São Paulo



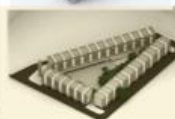
Elemental Chile
2003, Chile



Living Box
2006



Habita Sampa, Conjunto Cônego Vicente Marino
2004, São Paulo

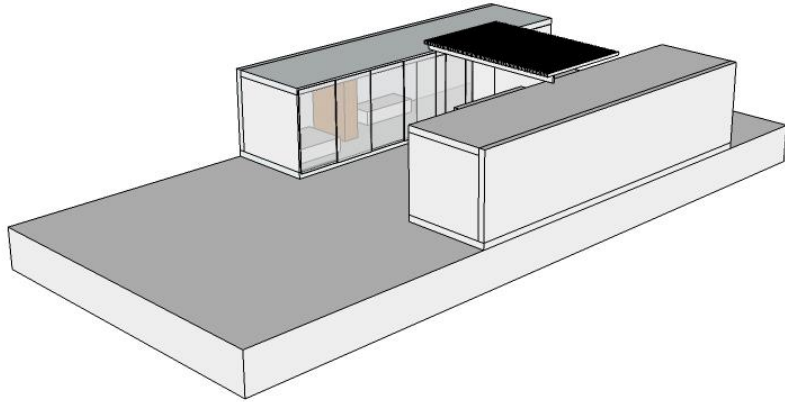


ESTÚDIO AMÉRICA

Protótipo de Unidade Habitacional
2009, Luanda, Angola.

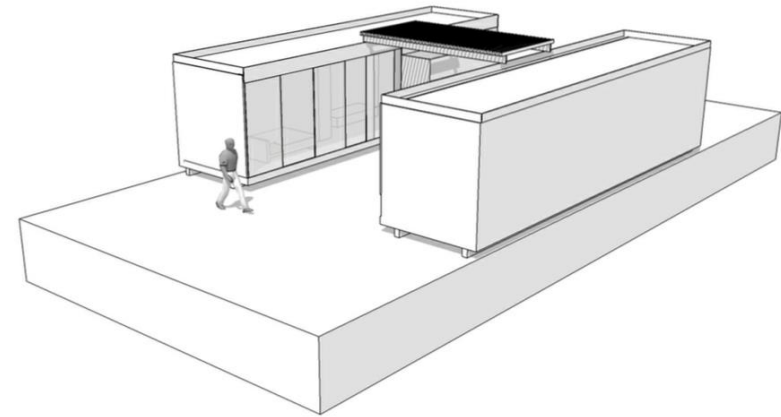


House in Luanda (2010)



- International contest launched by the Lisbon Architecture Triennial 2010/2011
- Low cost patio-house
- Flat area near the city limits of Luanda

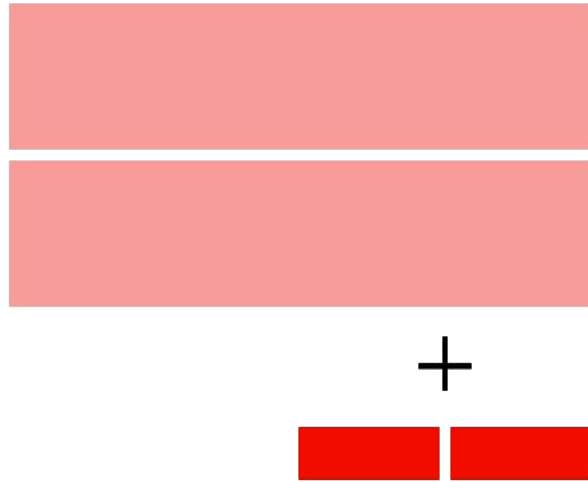
Green Housing in Brasilia (2011)



- Latin American contest - Holcim Awards
- Development of sustainable and innovative constructions that are focused on the future
- Vila Planalto, Brasilia.

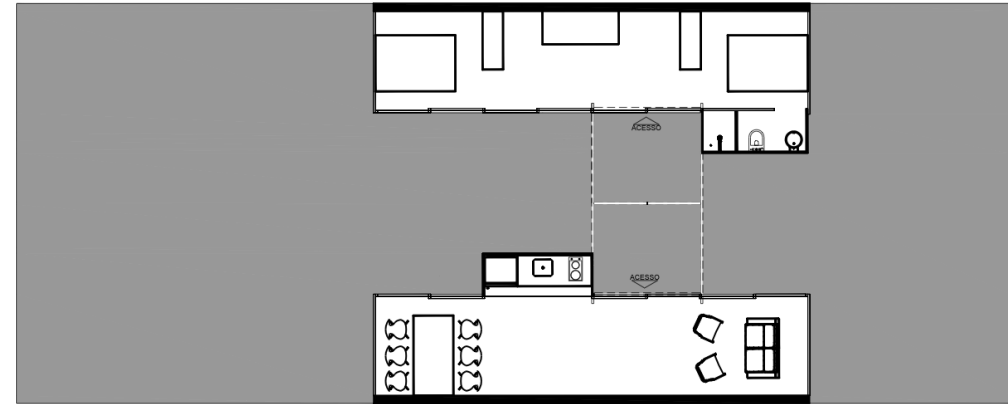
How the same typology addresses different project problems imposed by different contexts?

1. THE UNIVERSAL CELL “H” AND ITS EXTENSIONS

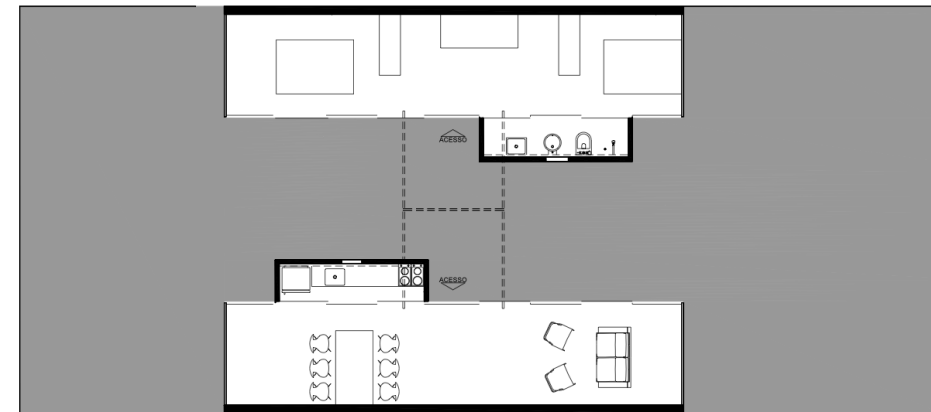


Two rectangular prisms with the dry areas: Social and intimate sector.

Two smaller sized prisms with the wet areas: Kitchen and Bathroom

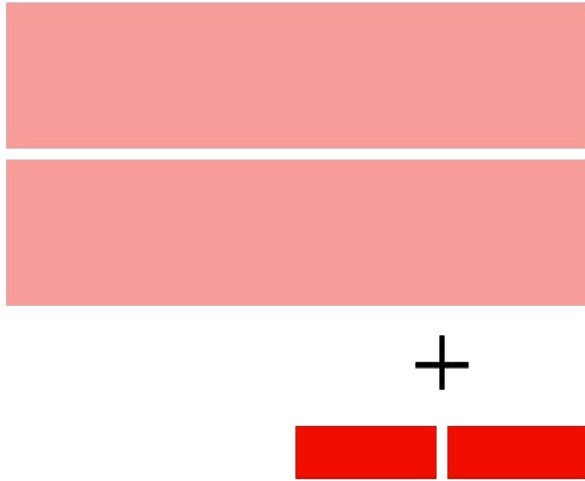


House in Luanda (2010)



Green Housing in Brasilia (2011)

1. THE UNIVERSAL CELL “H” AND ITS EXTENSIONS

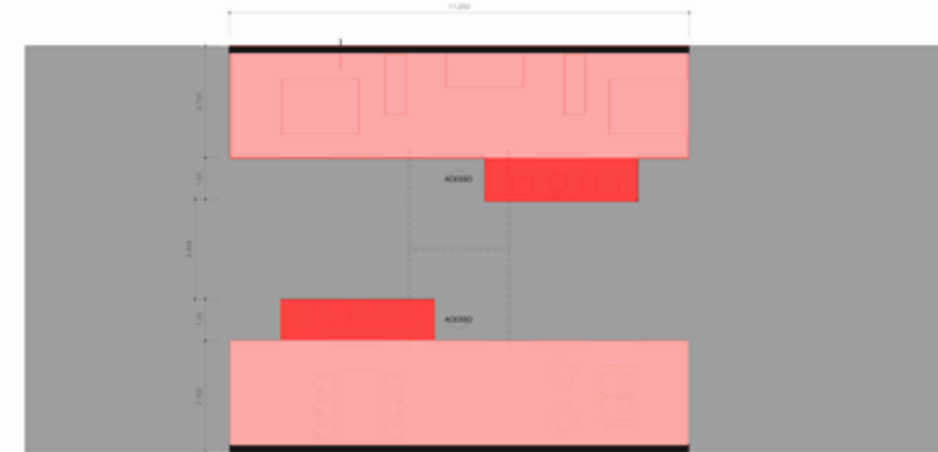


Two rectangular prisms with the dry areas: Social and intimate sector.

Two smaller sized prisms with the wet areas: Kitchen and Bathroom

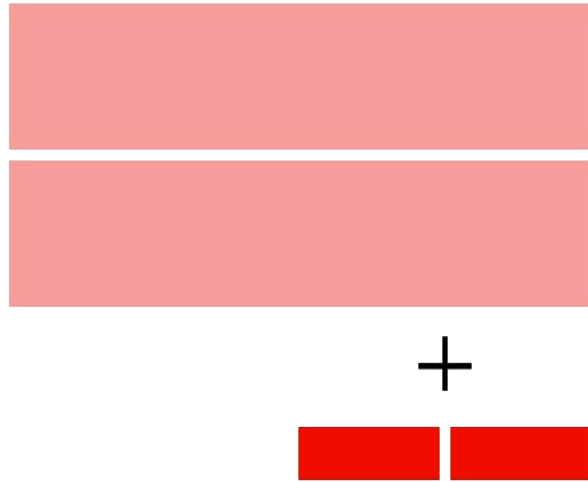


House in Luanda (2010)

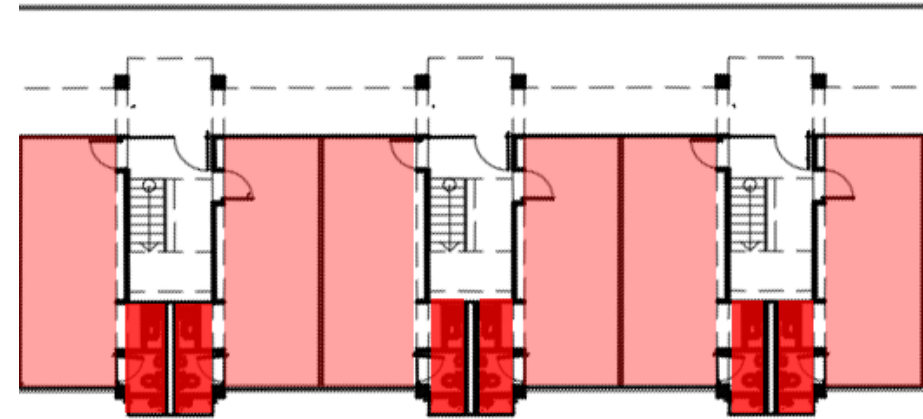


Green Housing in Brasilia (2011)

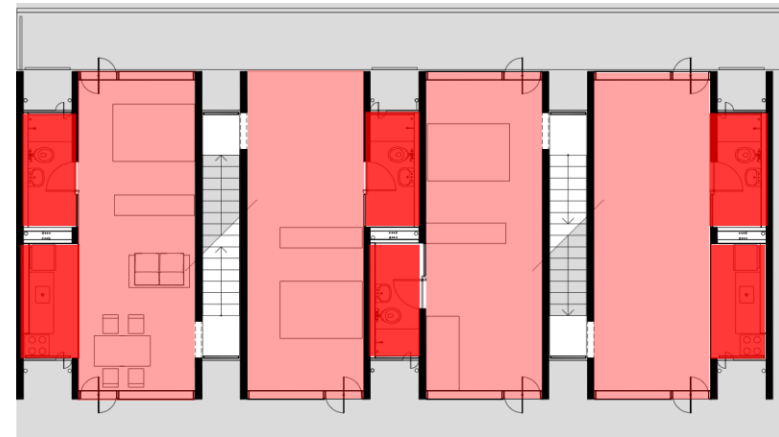
1. THE UNIVERSAL CELL “H” AND ITS EXTENSIONS



Other social housing projects from SP Group are also organized through the articulation of this pattern module or “universal cell”.

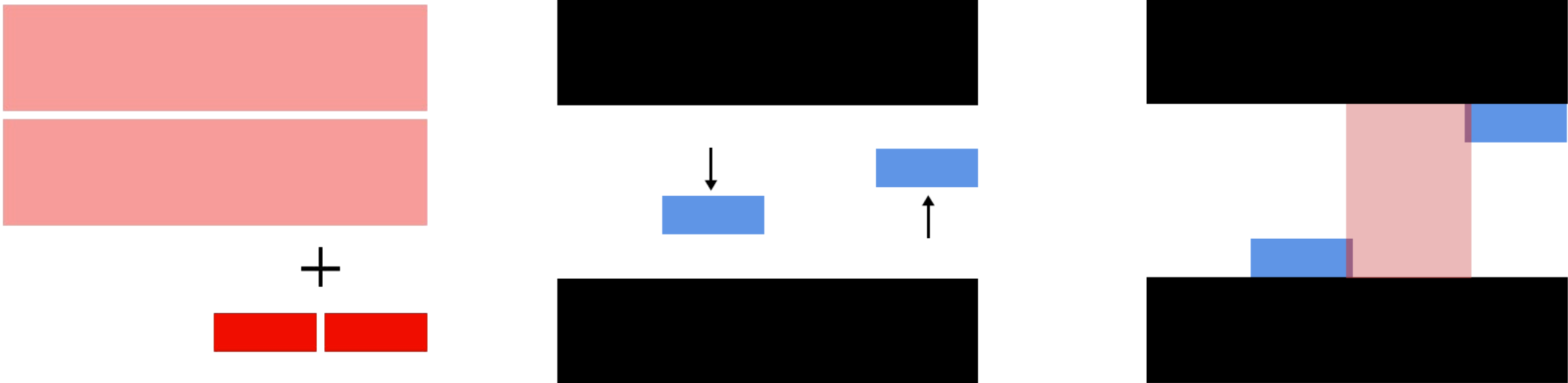


Cônego Vicente Marinho group of apartments (2004)

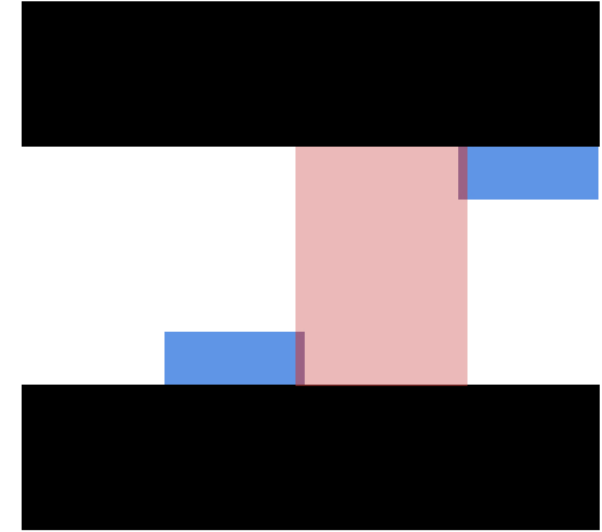
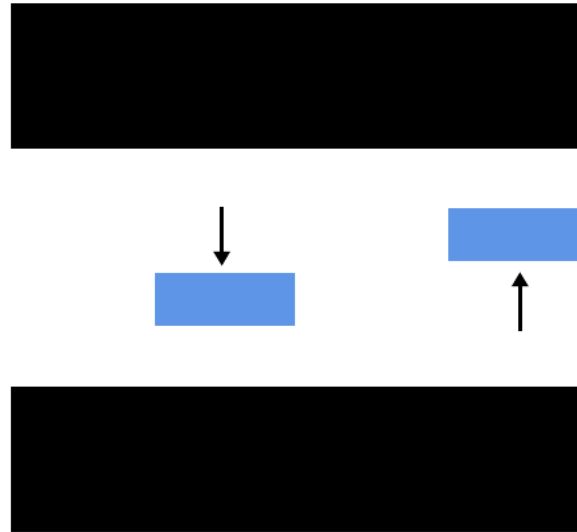
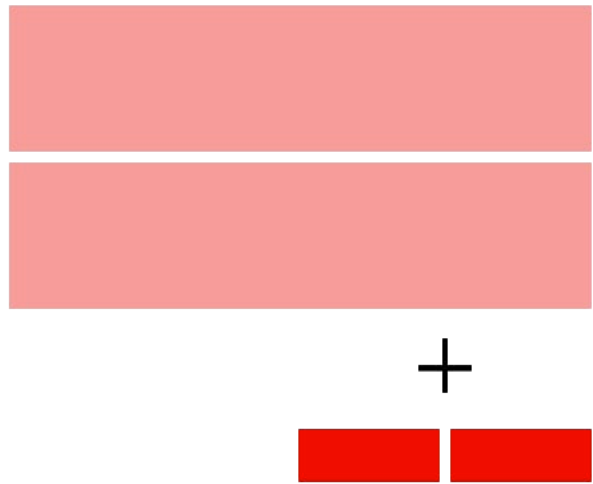


CAIXA (2004)

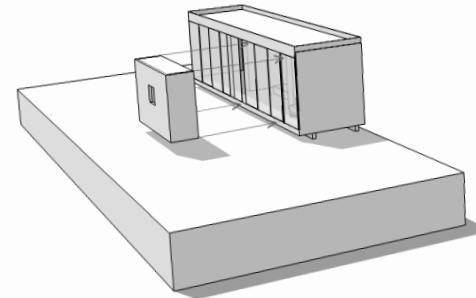
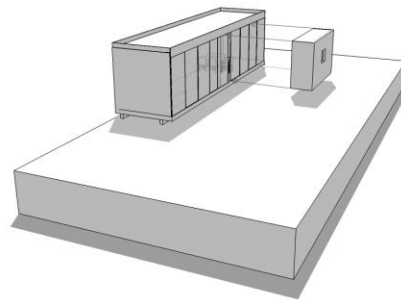
1. THE UNIVERSAL CELL “H” AND ITS EXTENSIONS



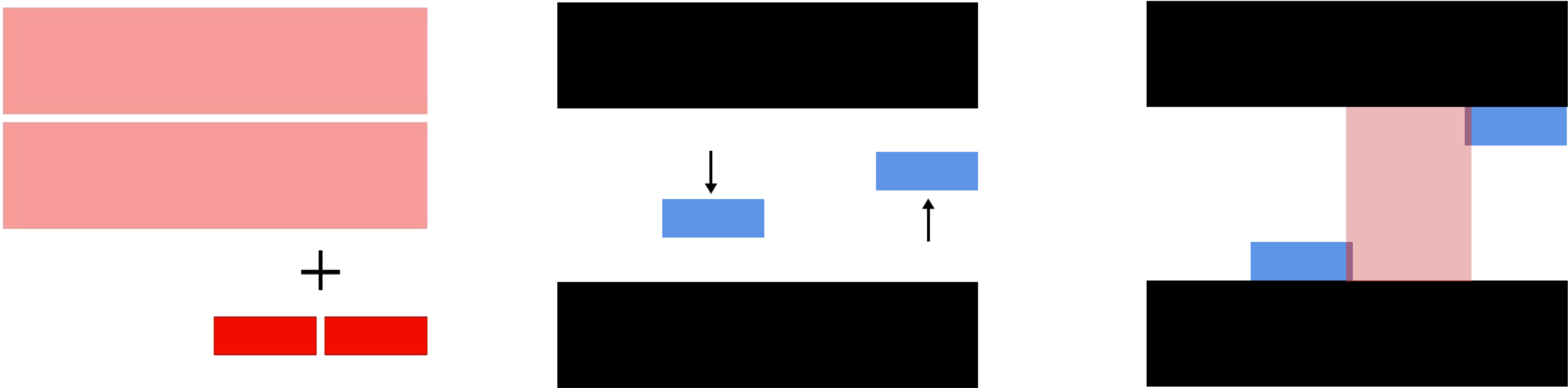
1. THE UNIVERSAL CELL “H” AND ITS EXTENSIONS



At each dry volume it is juxtaposed a smaller volume which contains the wet area.

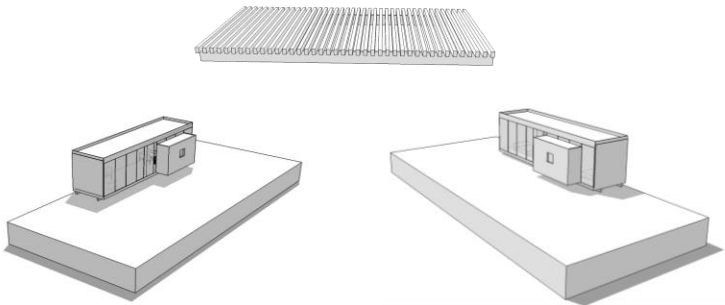
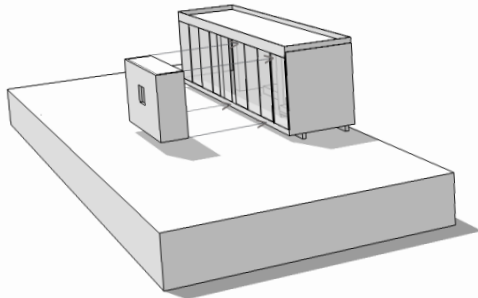
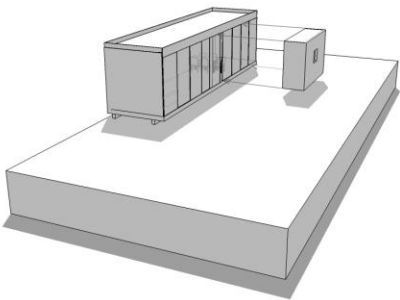


1. THE UNIVERSAL CELL “H” AND ITS EXTENSIONS

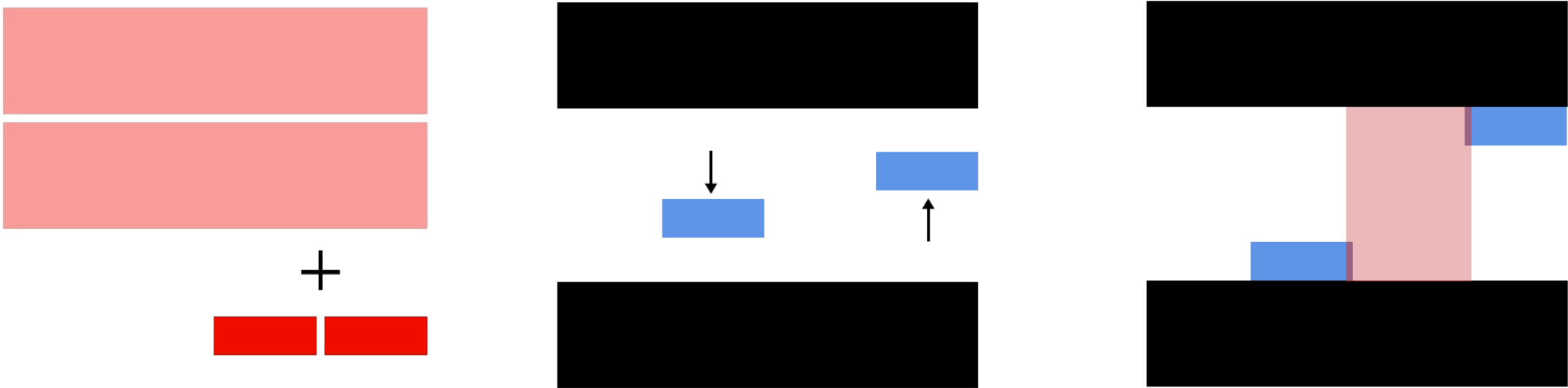


At each dry volume it is juxtaposed a smaller volume which contains the wet area.

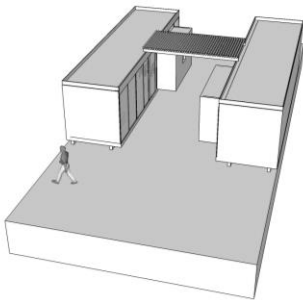
A connecting element is added to the composition setting the final form shaped 'H'.



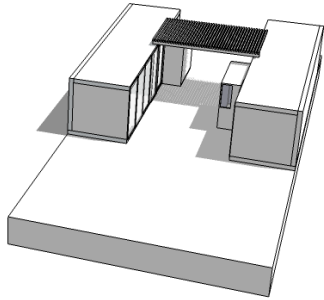
1. THE UNIVERSAL CELL “H” AND ITS EXTENSIONS



This element creates the access areas and connects the intimate and the social blocks. This happens the same way in both projects.

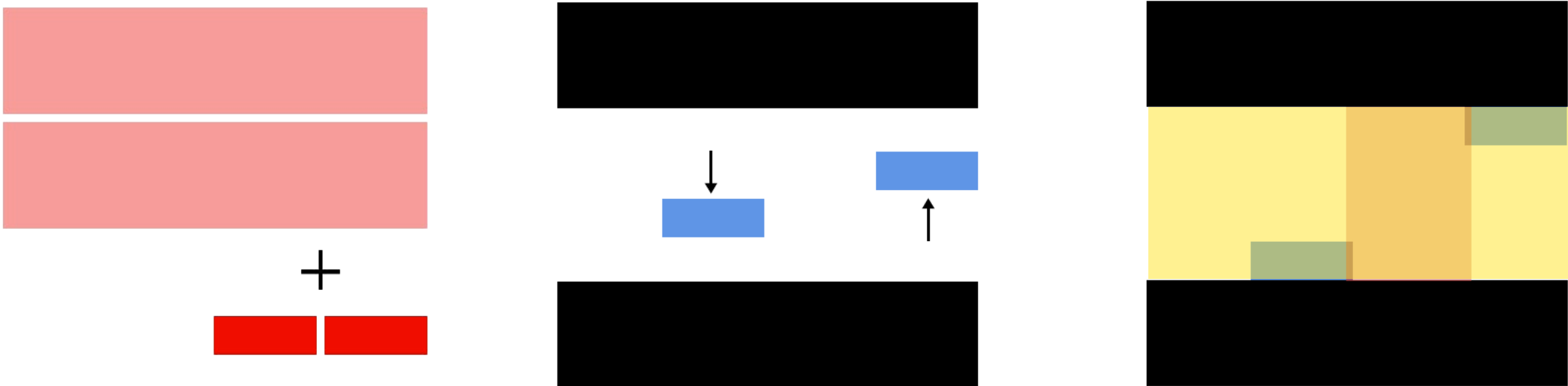


House in Luanda (2010)

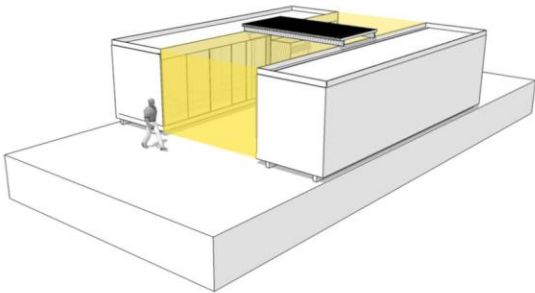


Green Housing in Brasília (2011)

1. THE UNIVERSAL CELL “H” AND ITS EXTENSIONS



The two volumes, now composed, stay parallel, face to face and the space between them sets a semi-private patio, pointed in yellow.



1. THE UNIVERSAL CELL “H” AND ITS EXTENSIONS



House in Luanda (2010)

Red – Intimate sector
Yellow – Service sector
Orange – Social sector



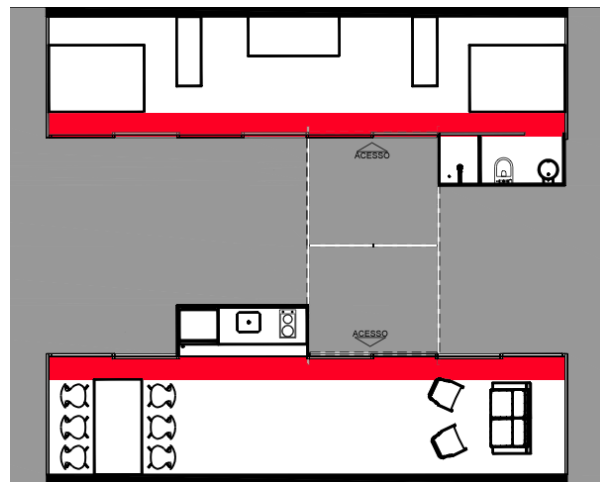
Green Housing in Brasilia (2011)

These areas are strictly related to the central patio, to where all the rooms open themselves through glazed panels. It works like a natural extension of all ambiances.

1. THE UNIVERSAL CELL “H” AND ITS EXTENSIONS

In order to make a spatial analysis, one must have in consideration that these are small sized houses (Luanda 26,25 m² and Brasília 33,75m² covered area) - in which small subtleties set big changes.

House in Luanda (2010)

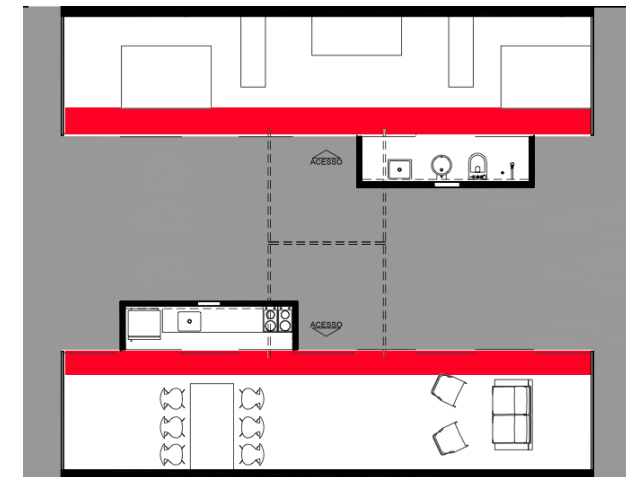


Non-partitioning of space

Both blocks have a free plan and a circulation developed in their periphery.

The spaces that require privacy, like bedrooms, are suggested by the furniture.

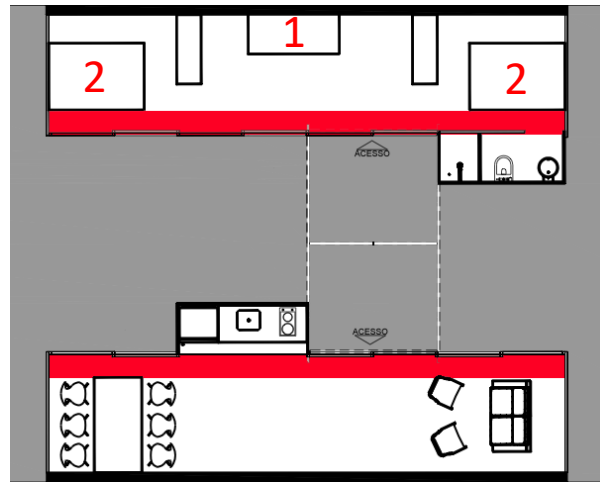
Green Housing in Brasília (2011)



1. THE UNIVERSAL CELL “H” AND ITS EXTENSIONS

In order to make a spatial analysis, one must have in consideration that these are small sized houses (Luanda 26,25 m² and Brasília 33,75m² covered area) - in which small subtleties set big changes.

House in Luanda (2010)

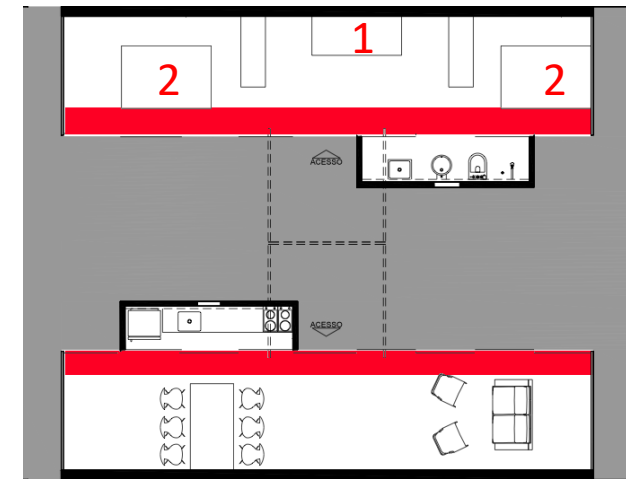


Non-partitioning of space

Both blocks have a free plan and a circulation developed in their periphery.

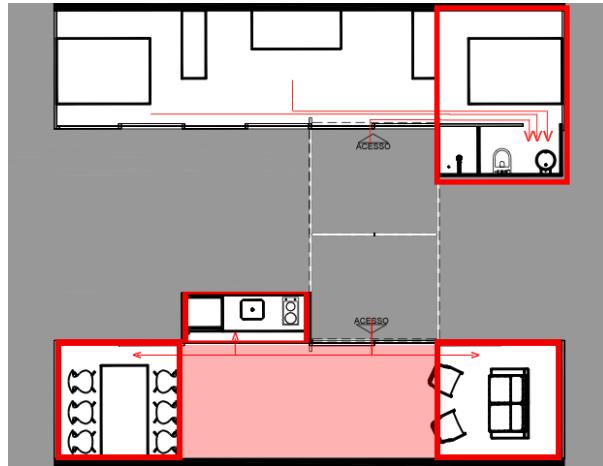
The spaces that require privacy, like bedrooms, are suggested by the furniture.

Green Housing in Brasilia (2011)



1. THE UNIVERSAL CELL “H” AND ITS EXTENSIONS

House in Luanda (2010)

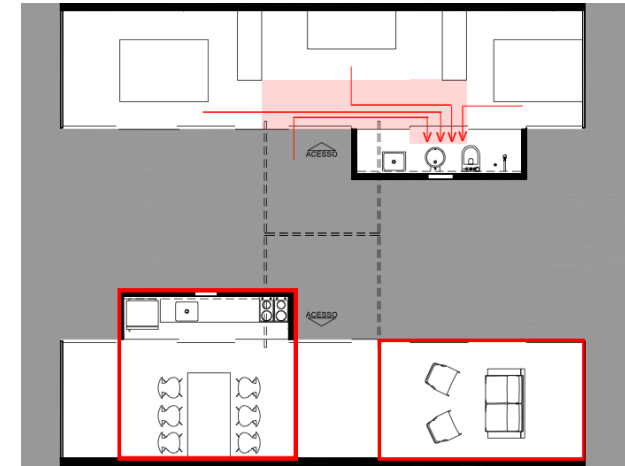


In Luanda the double bedroom is configured as a suite.

The existence of only one bathroom compromises the privacy of that room.

The kitchen relates to an undetermined space, that merges with the circulation.

Green Housing in Brasilia (2011)

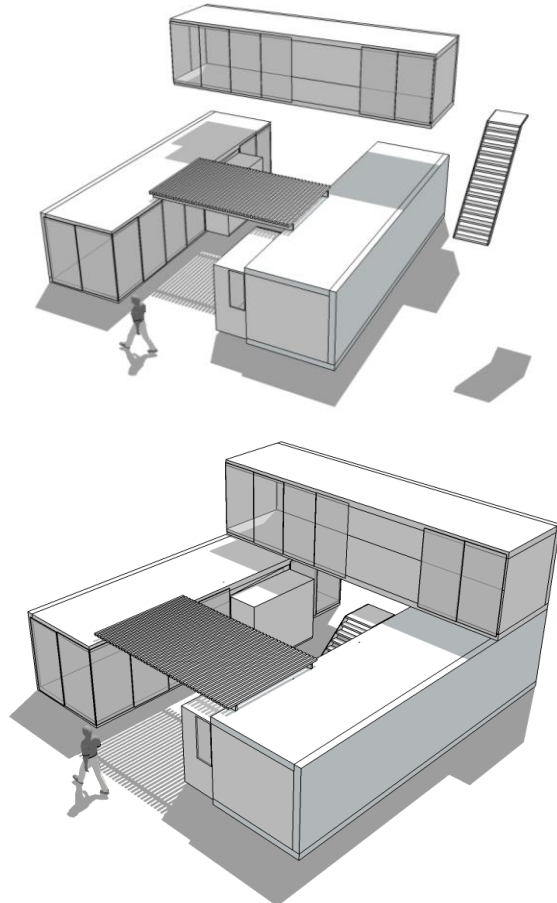


In Brasília the bathroom is slightly displaced, ensuring more privacy to the room.

The kitchen articulates with the dinning area, setting two areas: kitchen/dinning and living.

1. THE UNIVERSAL CELL “H” AND ITS EXTENSIONS

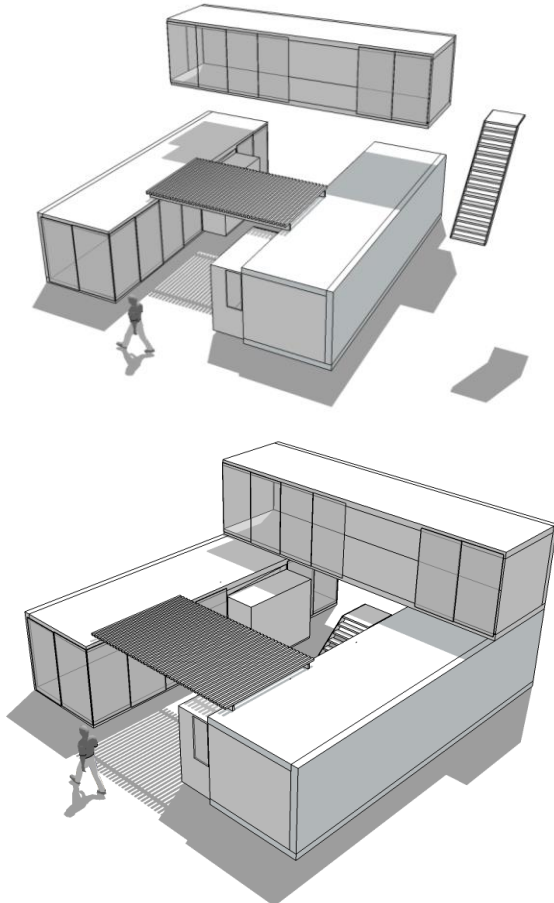
House in Luanda (2010)



Addition of a block juxtaposed transversely on the previous blocks, with staircase aggregation in the central courtyard.

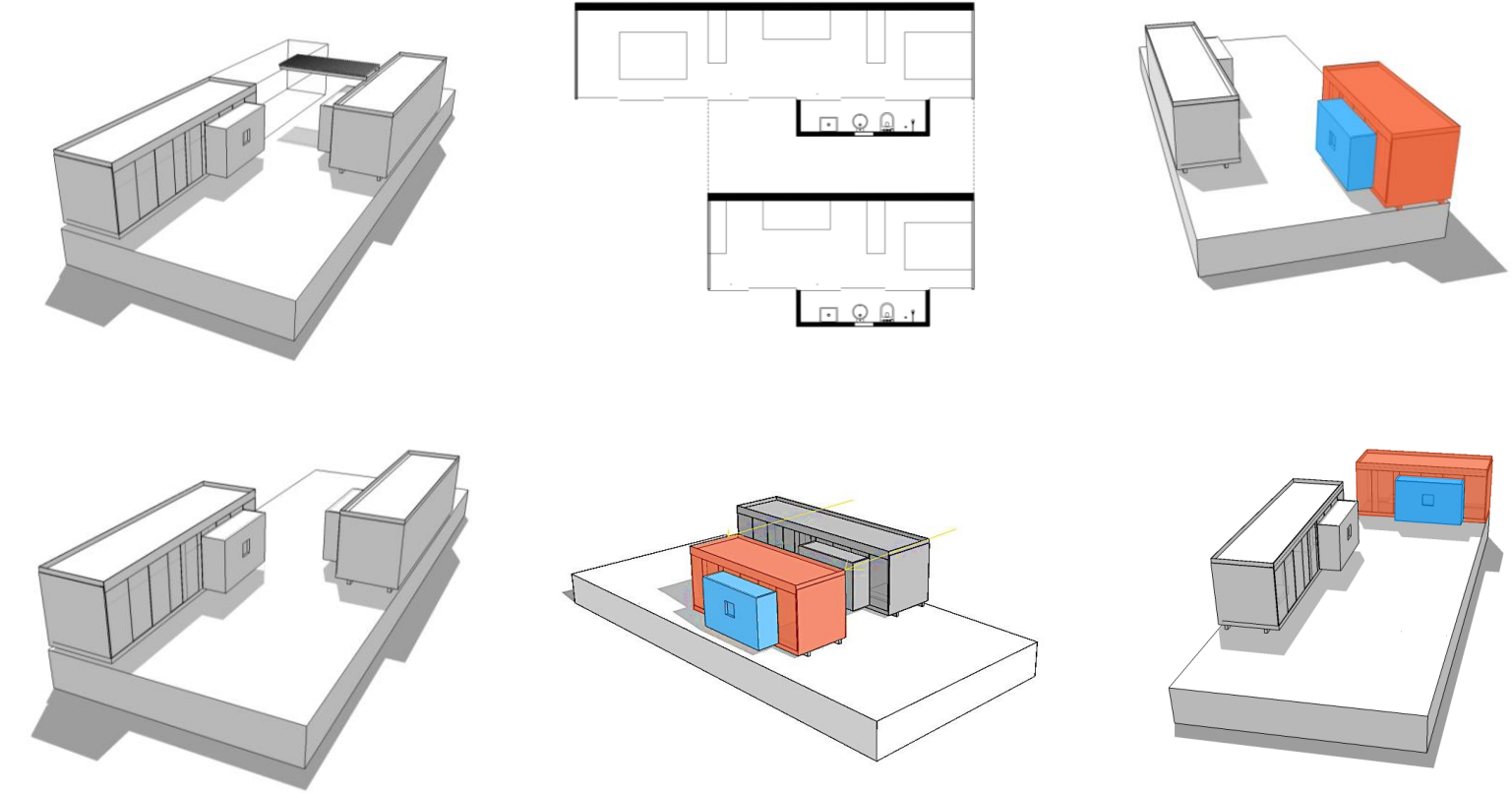
1. THE UNIVERSAL CELL “H” AND ITS EXTENSIONS

House in Luanda (2010)



Addition of a block juxtaposed transversely on the previous blocks, with staircase aggregation in the central courtyard.

Green Housing in Brasilia (2011)



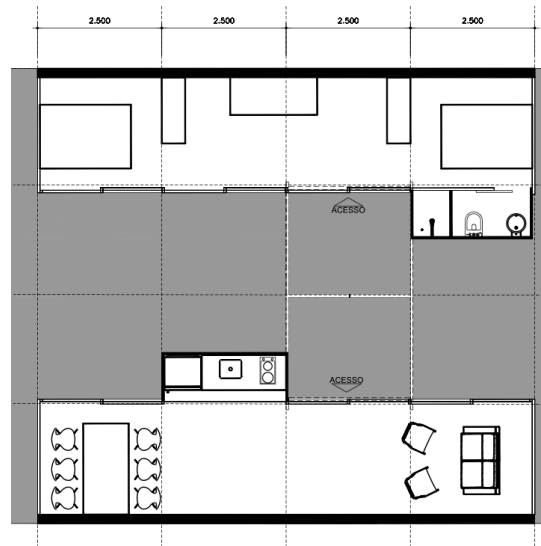
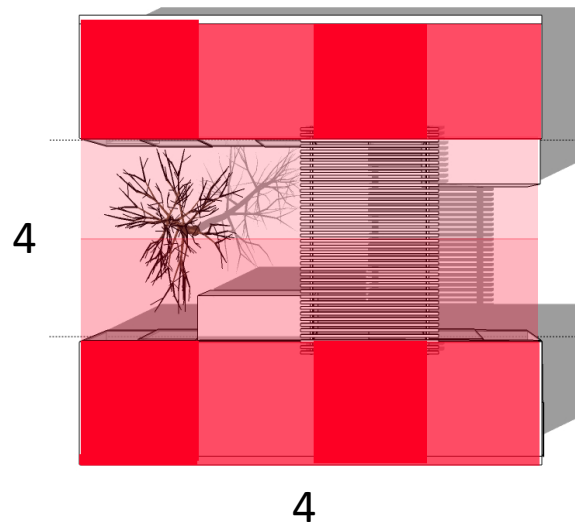
In Brasilia there's a dismembering of “H”. The prisms are now able to slide on the ground.

There is a new smaller block that comes from the reconfiguration of the intimate block.

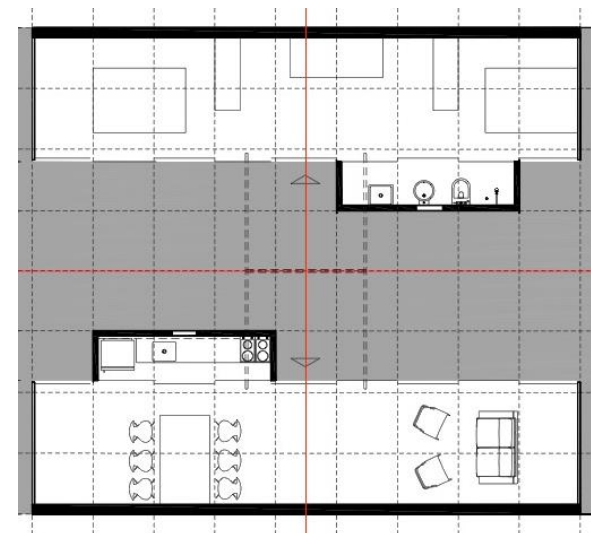
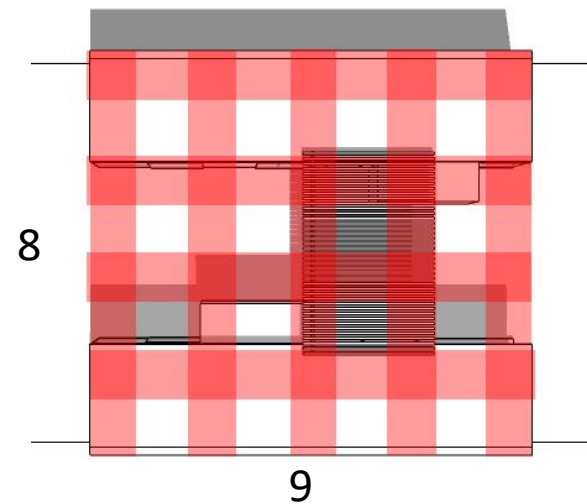
The position of this block is flexible: parallel or perpendicular to other blocks.

2. ANALYSIS OF THE MODULATION OF THE CELL

House in Luanda (2010)

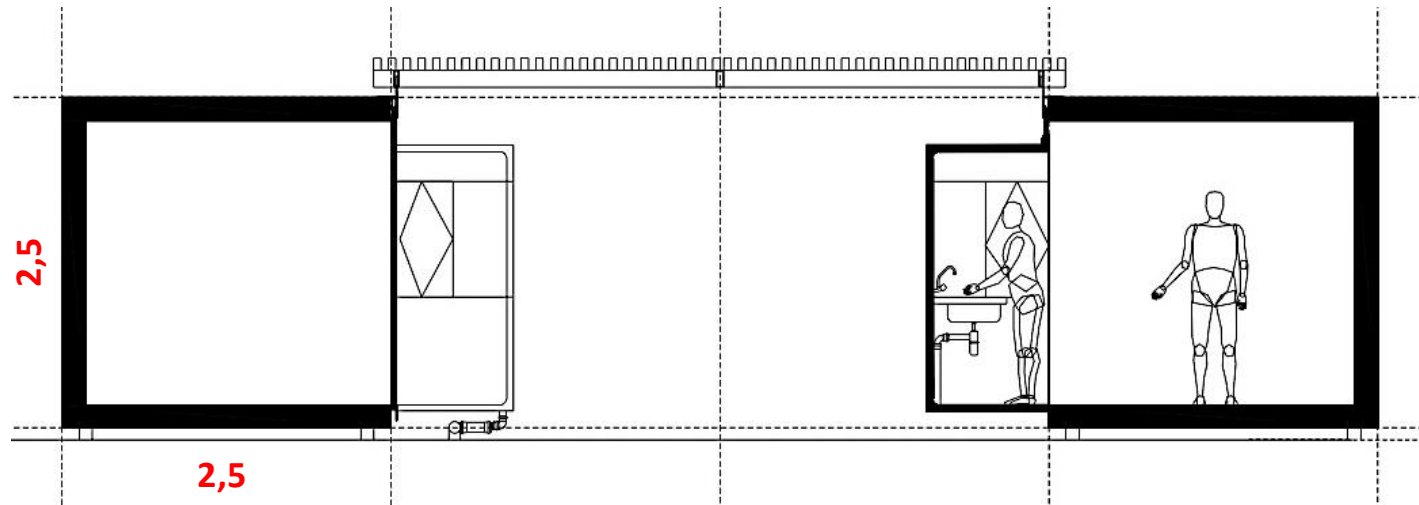
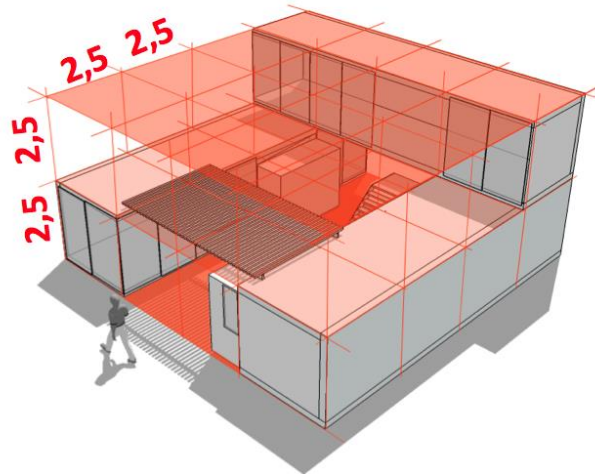


Green Housing in Brasilia (2011)

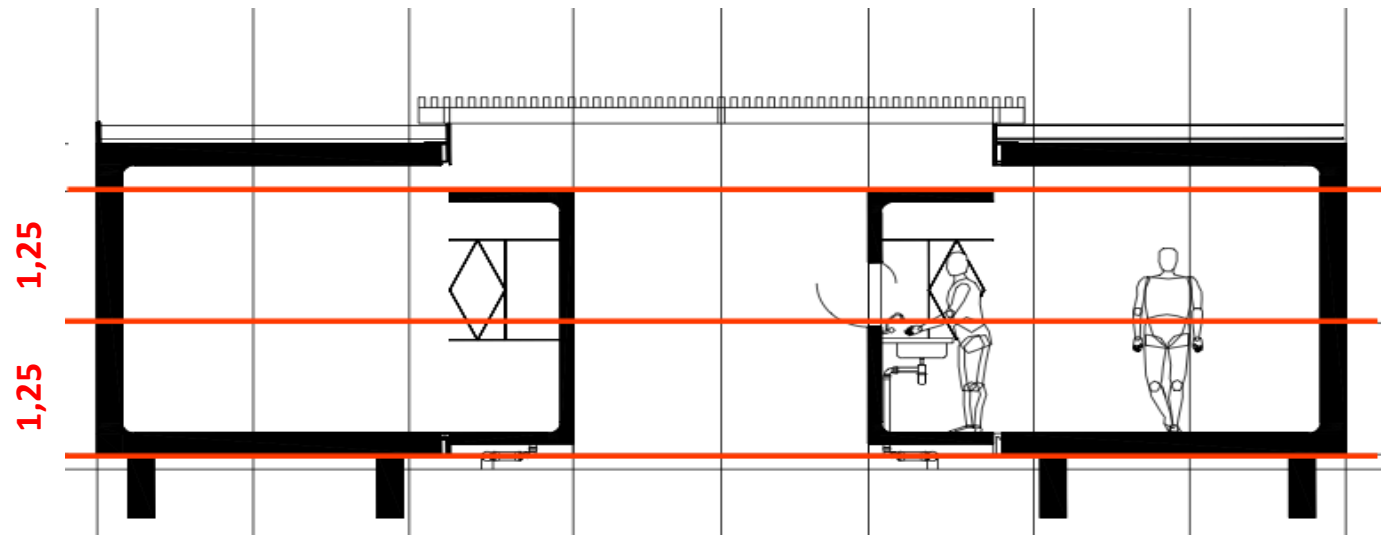


2. ANALYSIS OF THE MODULATION OF THE CELL

House in Luanda (2010)

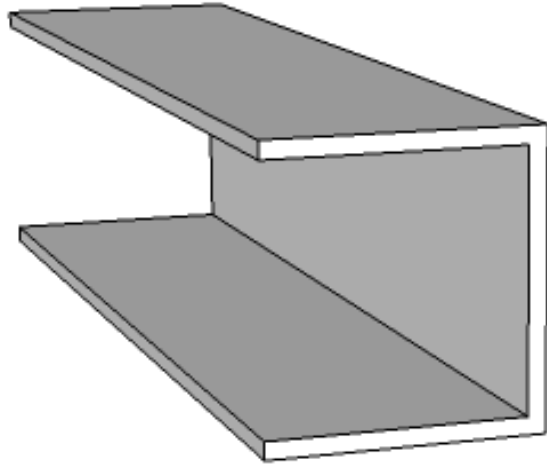


Green Housing in Brasilia (2011)



2. ANALYSIS OF THE MODULATION OF THE CELL

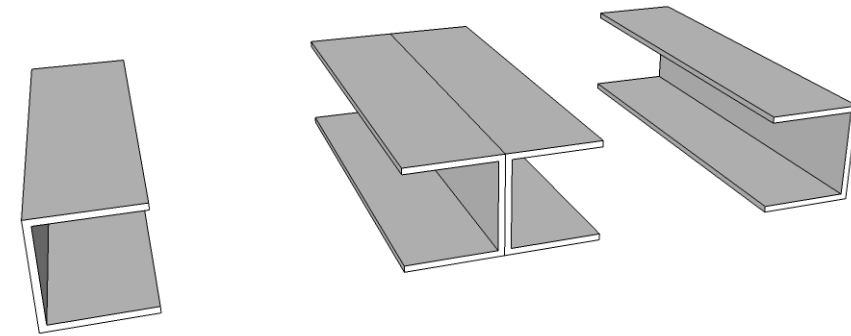
The modular design indicates the use of prefabrication, as verified in both projects.



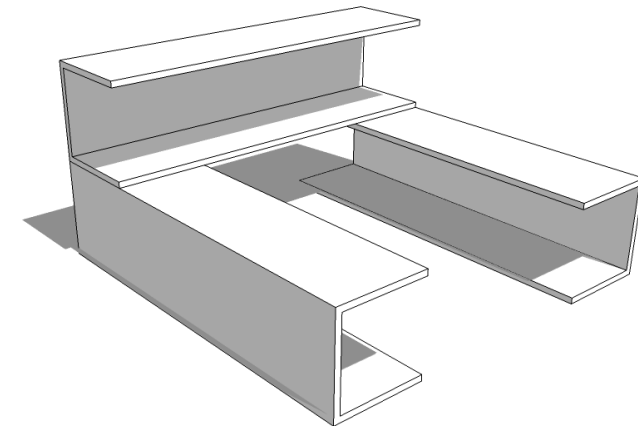
Prefabrication of a precast concrete C.

10 x 2,5 x 2,5 meters in Luanda

2,75 x 2,75 x 11 meters in Brasília



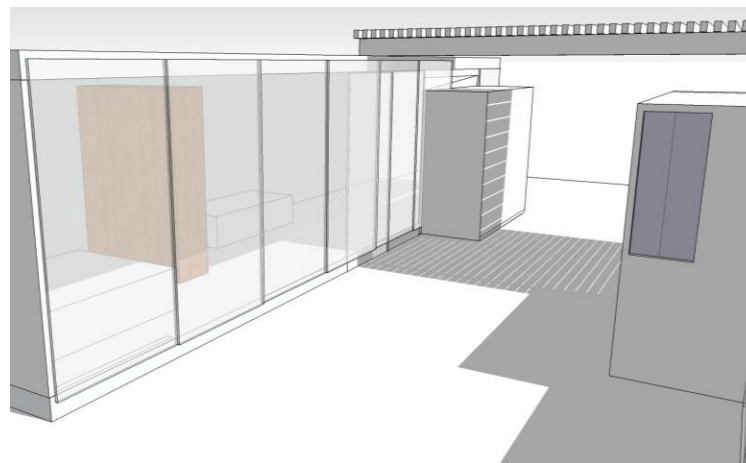
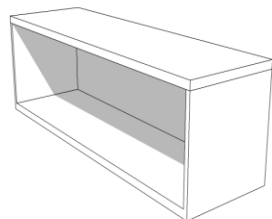
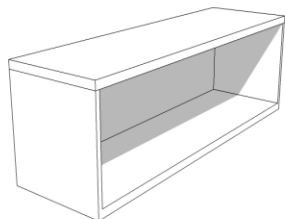
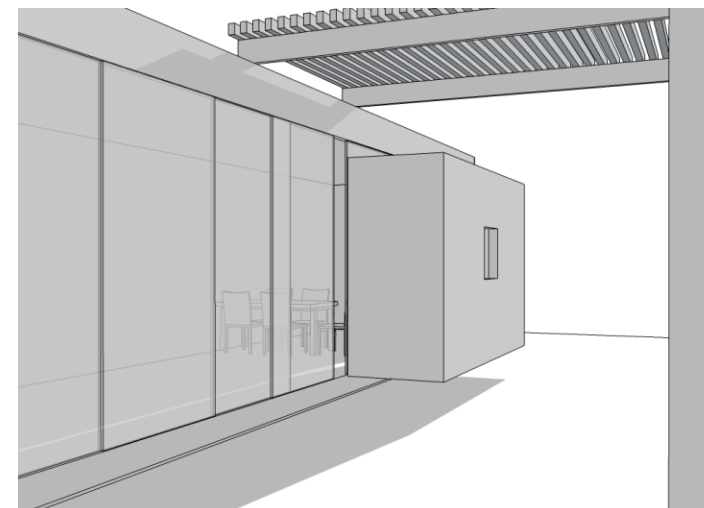
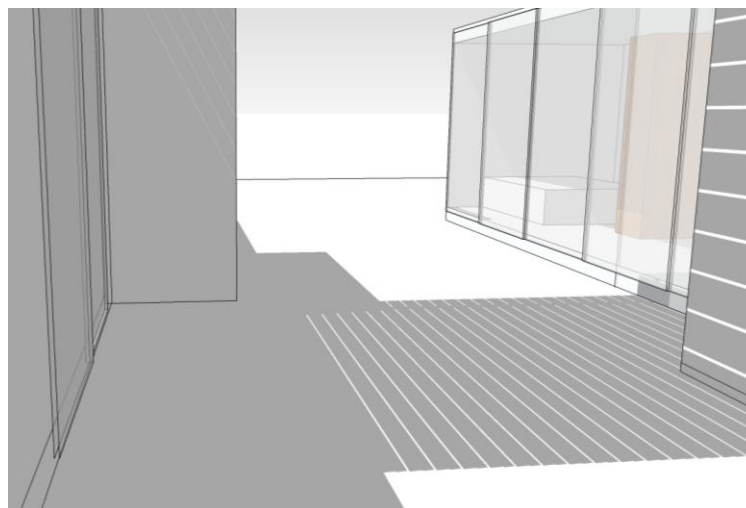
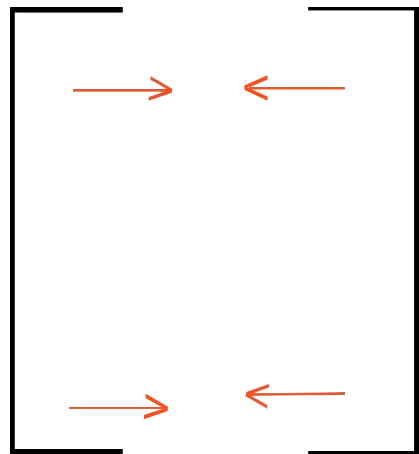
It can be juxtaposed



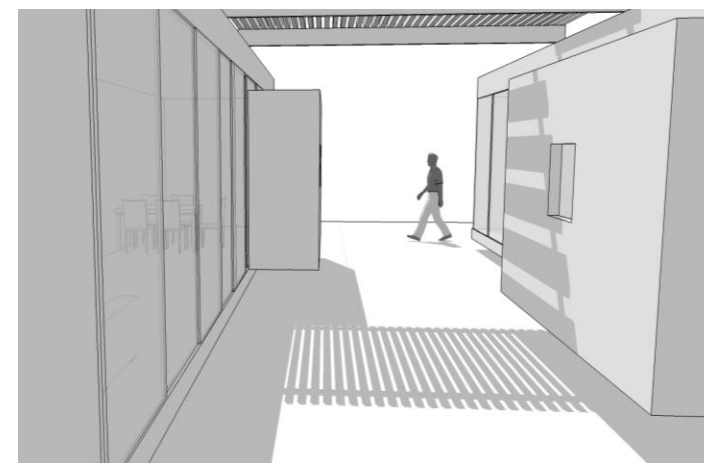
Or stacked.

3. OPENINGS AND SOLAR ORIENTATION

The treatment of the facades favours the physical and visual relation of the ambiances with the central courtyard

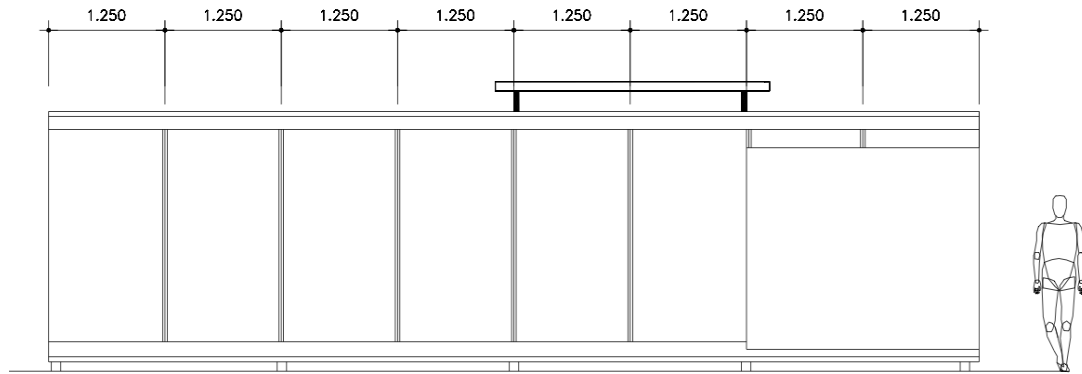


House in Luanda (2010)

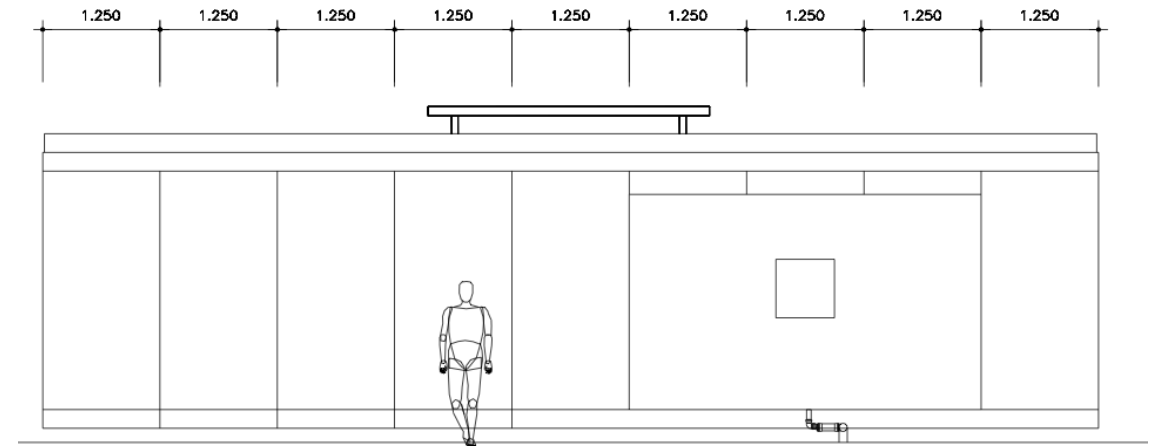


Green Housing in Brasilia (2011)

3. OPENINGS AND SOLAR ORIENTATION

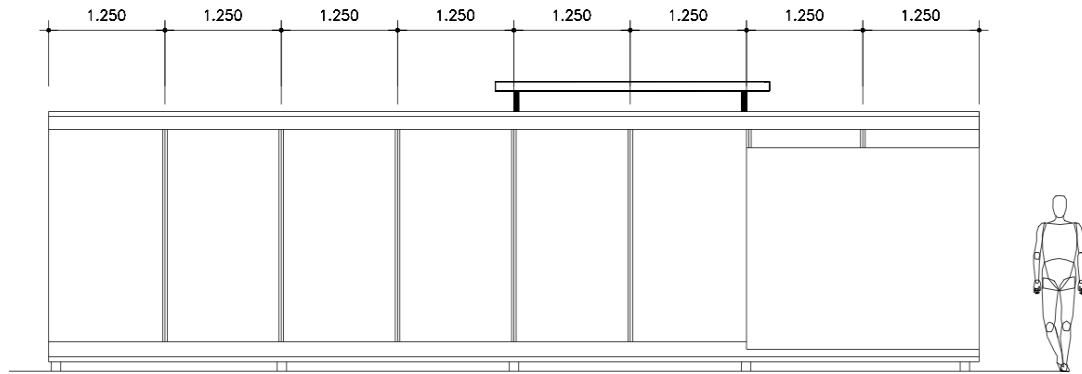


House in Luanda (2010)

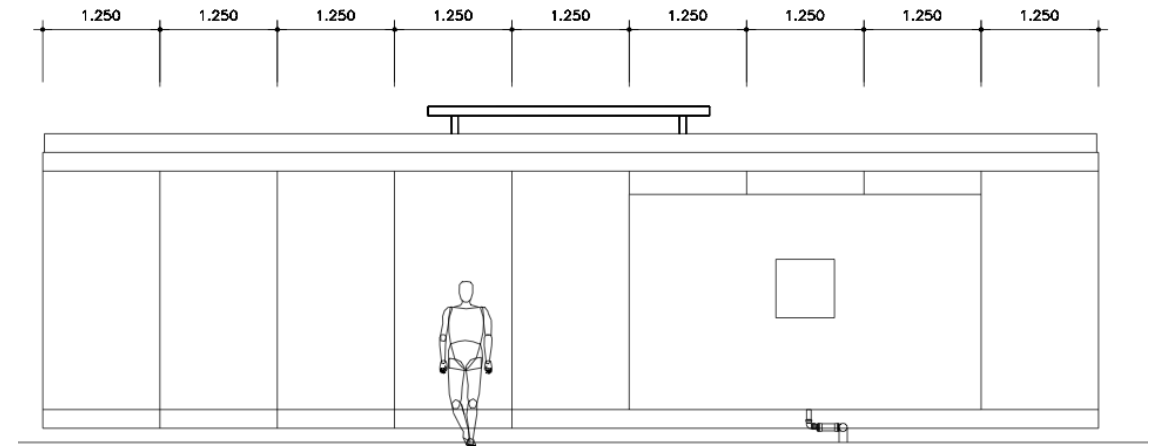


Green Housing in Brasilia (2011)

3. OPENINGS AND SOLAR ORIENTATION

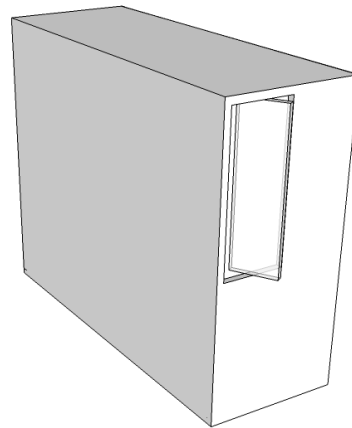


House in Luanda (2010)

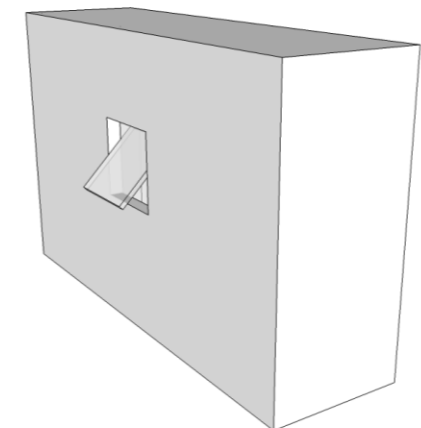


Green Housing in Brasilia (2011)

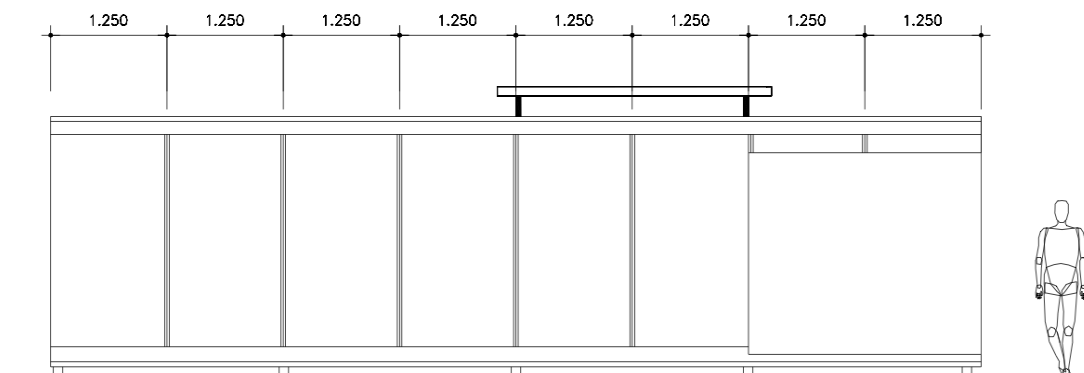
Two opposed openings in the side walls of each hydraulic block



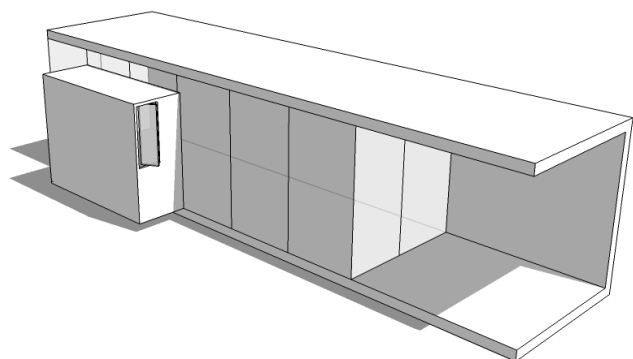
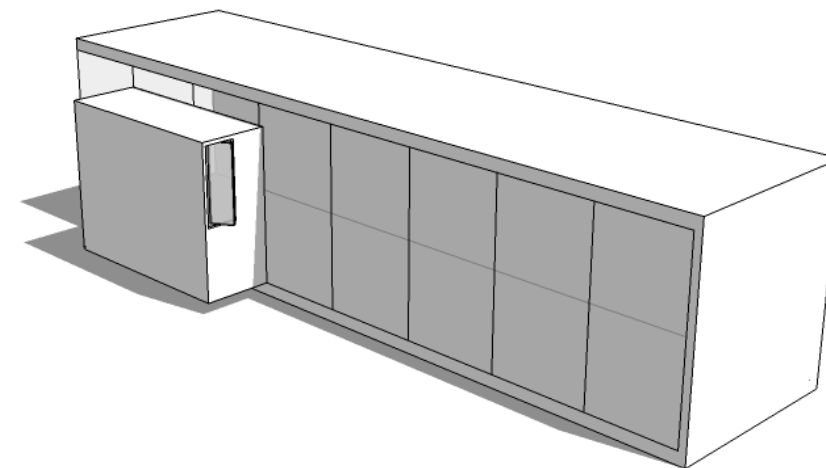
Just one window in the facade facing the patio



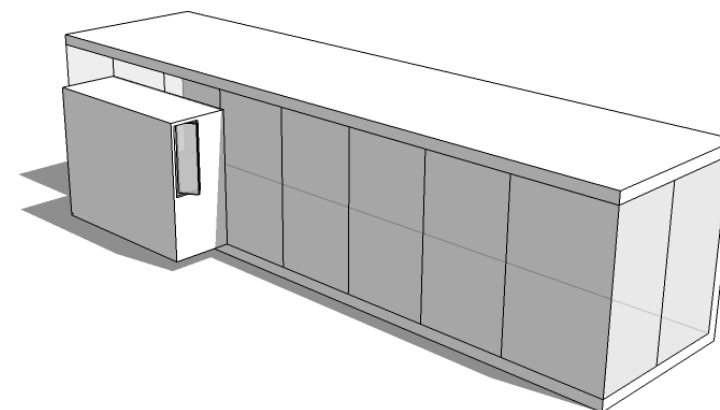
3. OPENINGS AND SOLAR ORIENTATION



House in Luanda (2010)



roll-back of the glass surfaces from the shape limits



opening or closing of the side planes

4. CELL-SITE

4.1 Lot

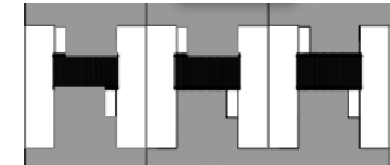
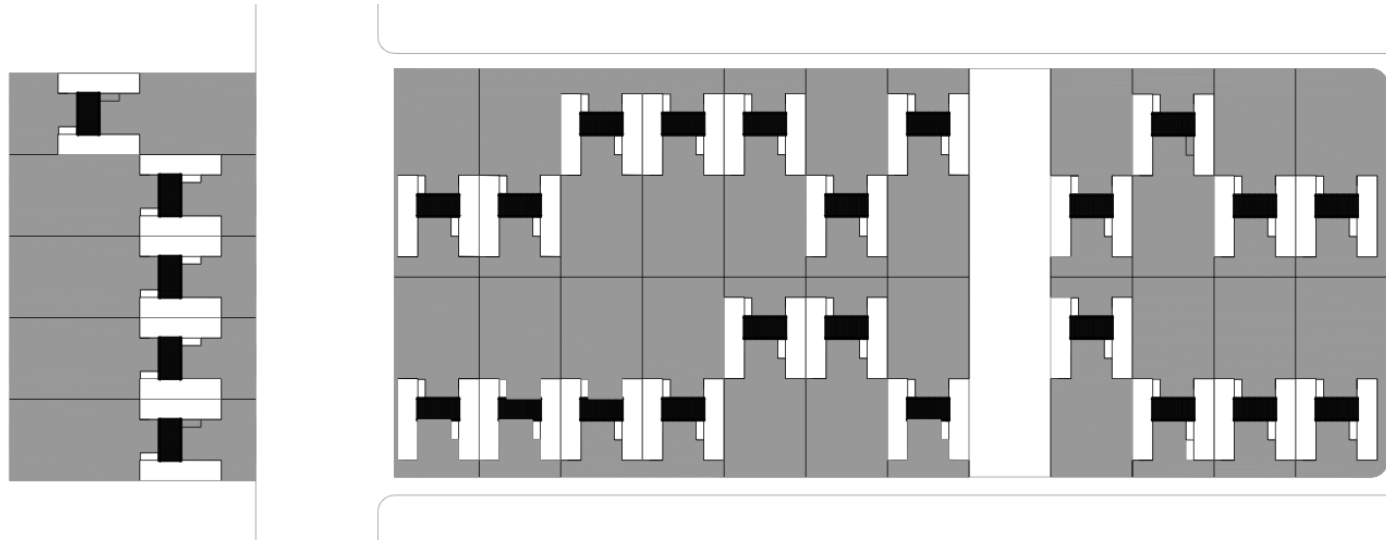
In House in Luanda, the lot isn't defined, described only as "a flat plot in the outskirts of Luanda"



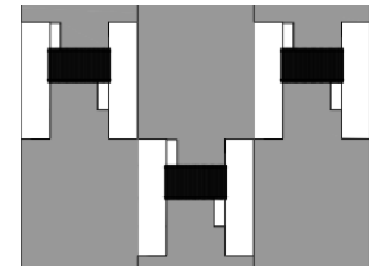
- 27 housing units for approximately 135 people

Group Sp chooses to organize the terrain, from the shape "H" of the base module. The blind facades of this module define the boundaries of the plots;

The units are juxtaposed in the land, two consecutive blind facades



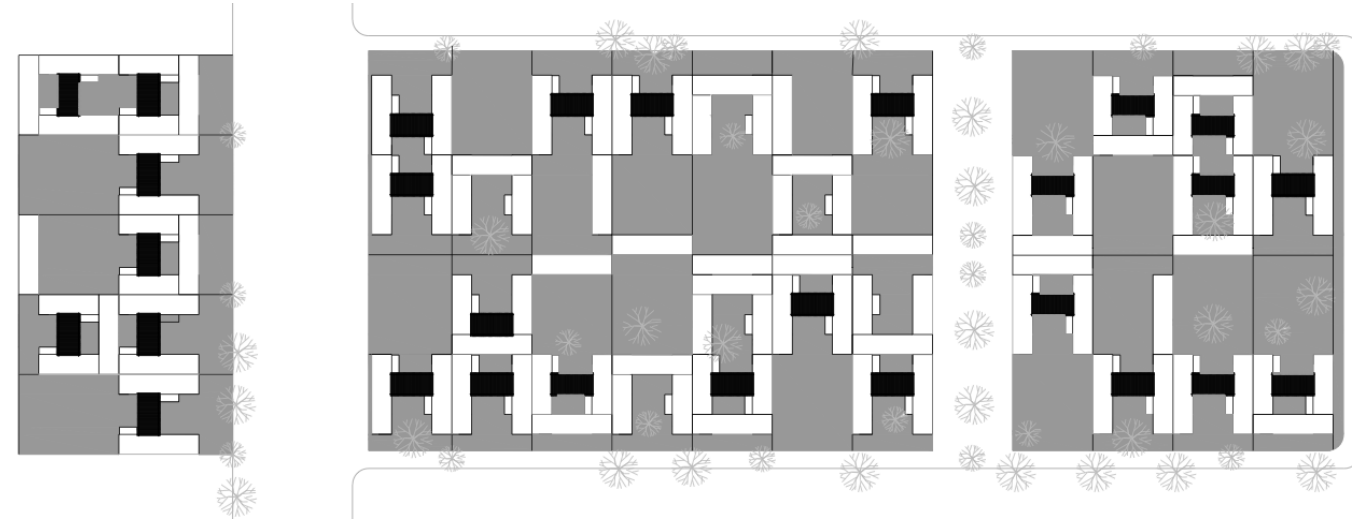
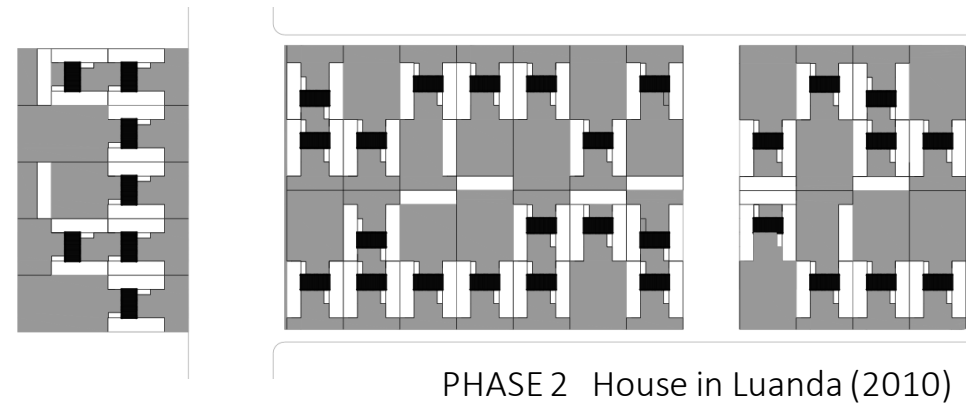
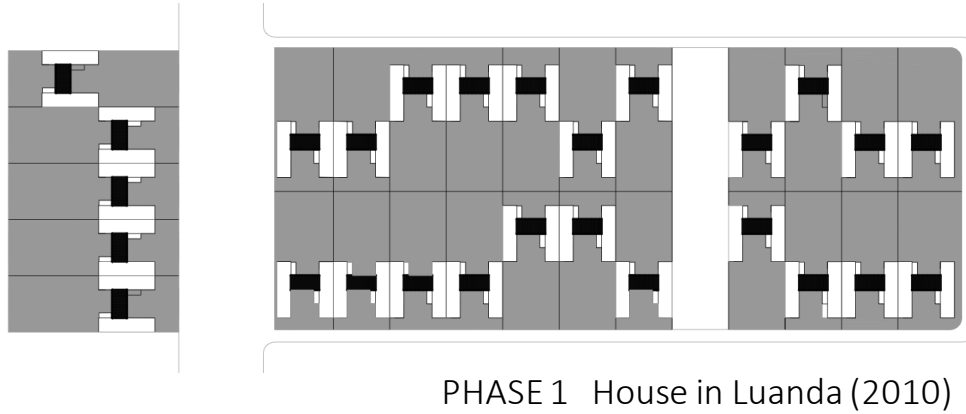
or interspersed



4. CELL-SITE

4.1 Lot

The SP Group designs a possibility of evolution of urban network in three phases.



We estimate that the populational density may increase more than 70% (approximately from 135 to 240 inhabitants).

4. CELL-SITE

4.1 Lot

The implementation of sustainable housing in Brasilia was planned in Vila Planalto, between Minas Gerais street and Brasília street.



approximately 172 residences



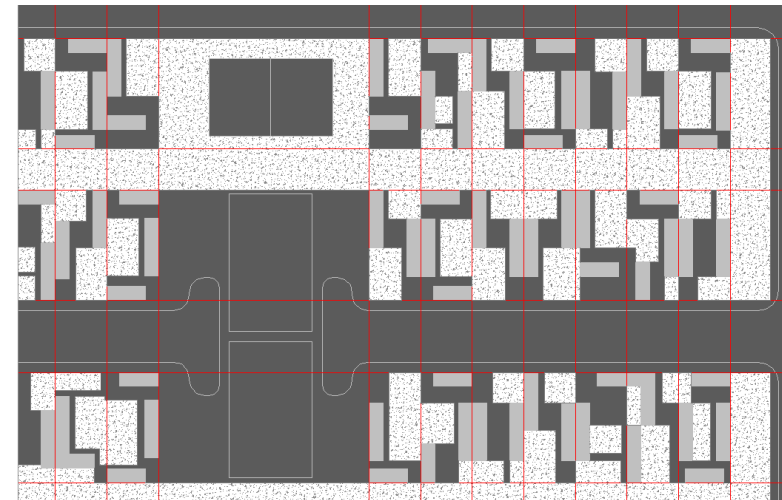
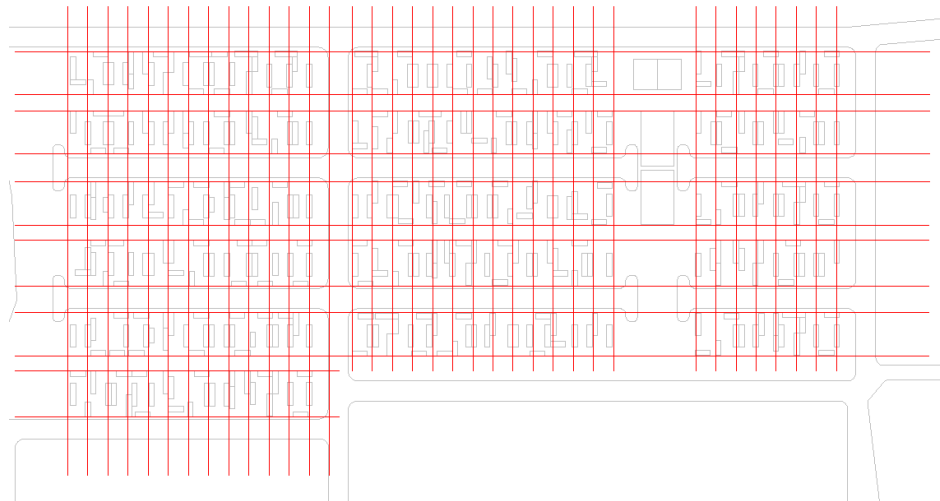
4. CELL-SITE

4.1 Lot

The implementation of sustainable housing in Brasilia was planned in Vila Planalto, between Minas Gerais street and Brasília street.

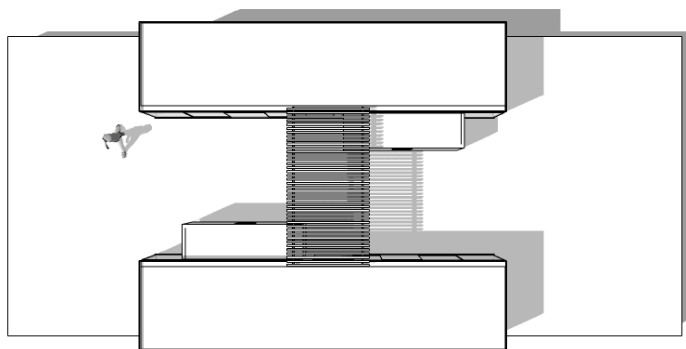


approximately 172 residences

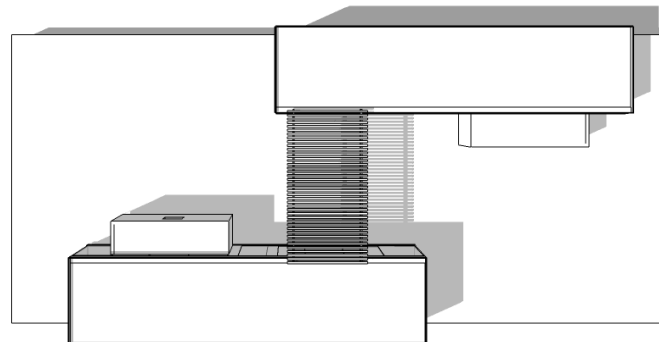


4. CELL-SITE

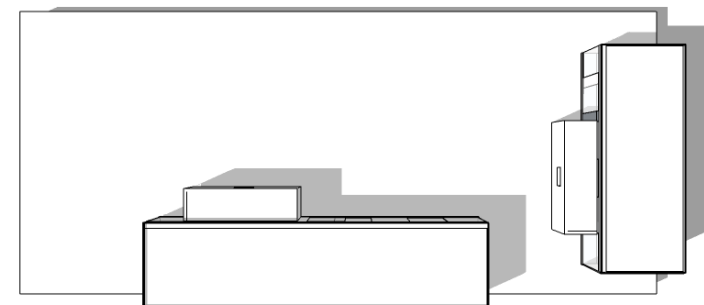
4.1 Lot



“H” as a base (39 units)



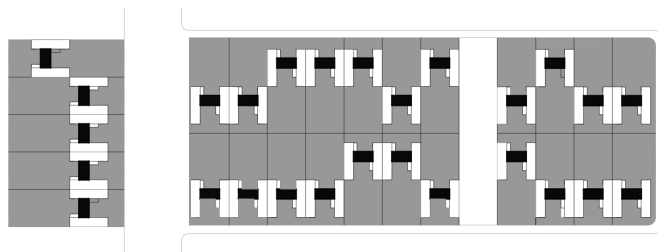
The blocks slide on the field but the connection element is held (69 units)



The connecting element disappears (64 units)

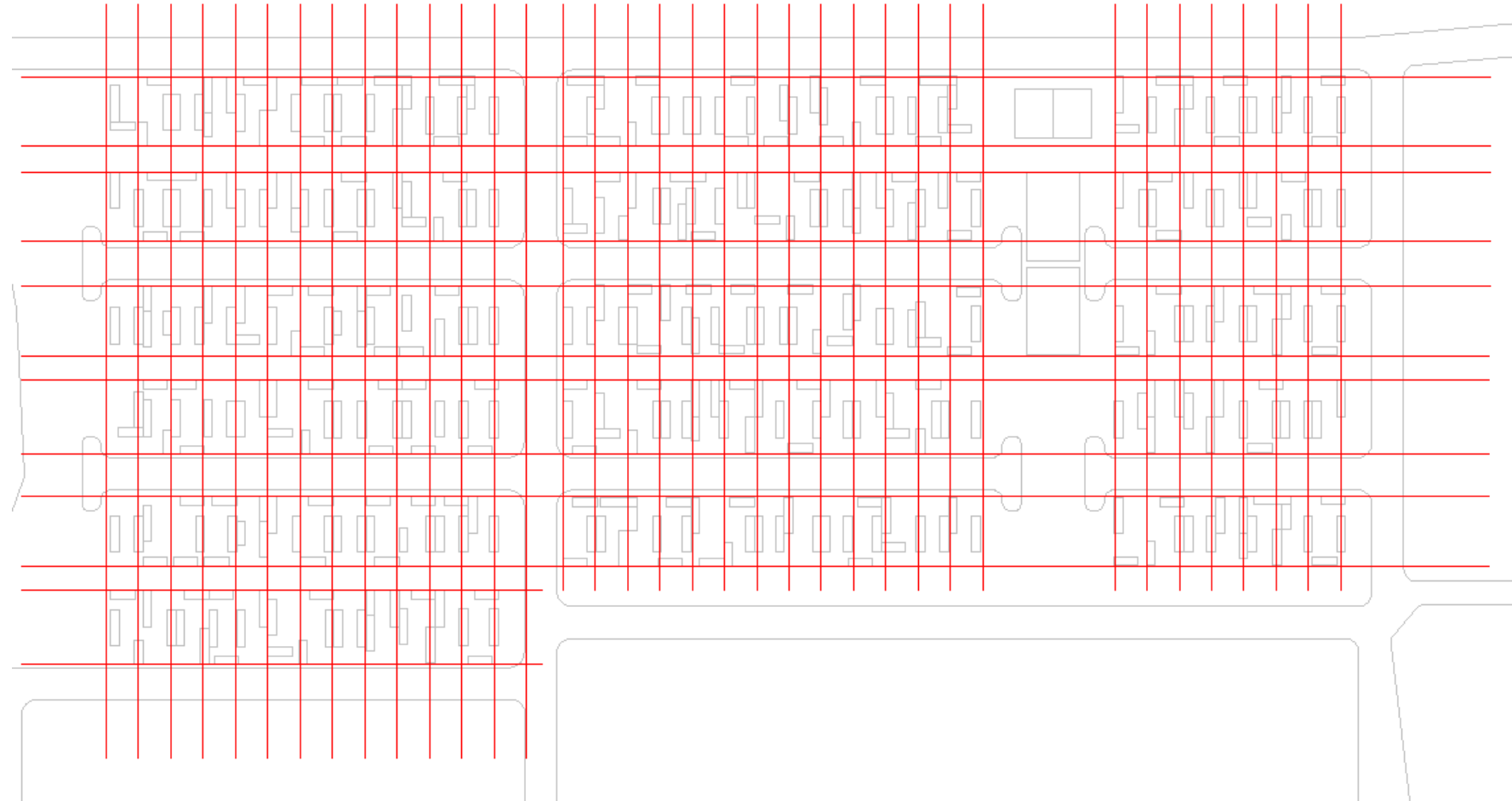
5. RELATIONS BETWEEN UNITS AND PUBLIC SPACE

The scales of the interventions are distinct in the two projects.



House in Luanda (2010)

Area: aprox. 708 m²
Plot: aprox. 7440m²

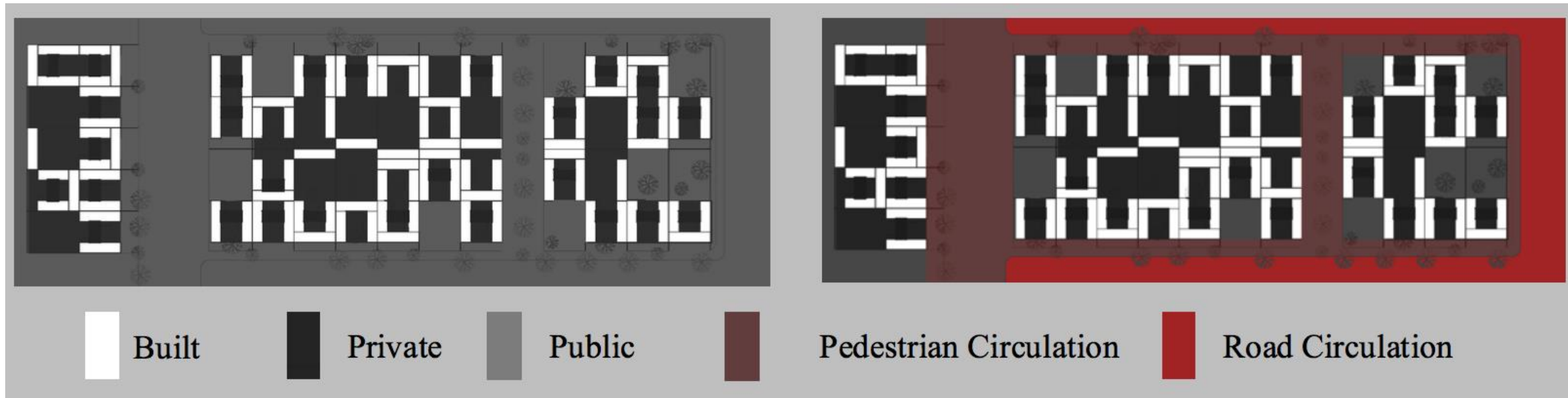


Green Housing in Brasilia (2011)

Area: aprox. 5805m²
Plot: aprox. 65000m²

5. RELATIONS BETWEEN UNITS AND PUBLIC SPACE

House in Luanda (2010)

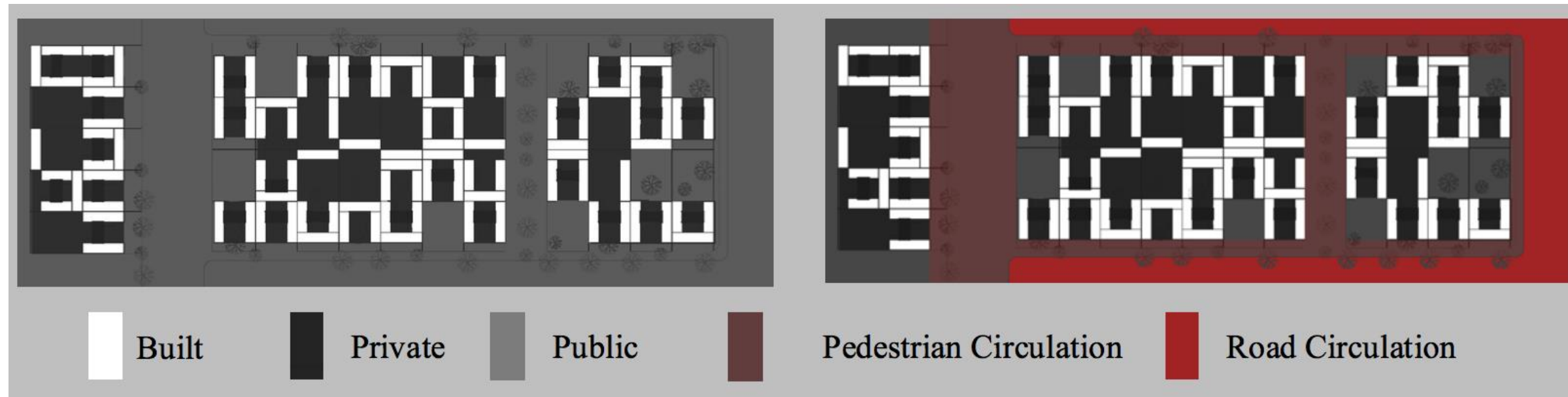


Three quarters – which geometry it's not strict.

The pedestrian and road circulations are usually peripheral.
There is an exception when the pedestrian circulation rips two ample paths.

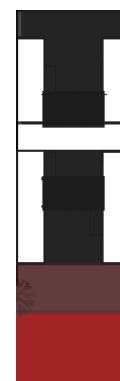
5. RELATIONS BETWEEN UNITS AND PUBLIC SPACE

House in Luanda (2010)



All the plots have immediate contact with a pedestrian path.

The contact of the unit with the circulation can be done in three ways:



Base cell immediately perpendicular to the circulation, allowing the access to the “interior of the quarter” by its centre;

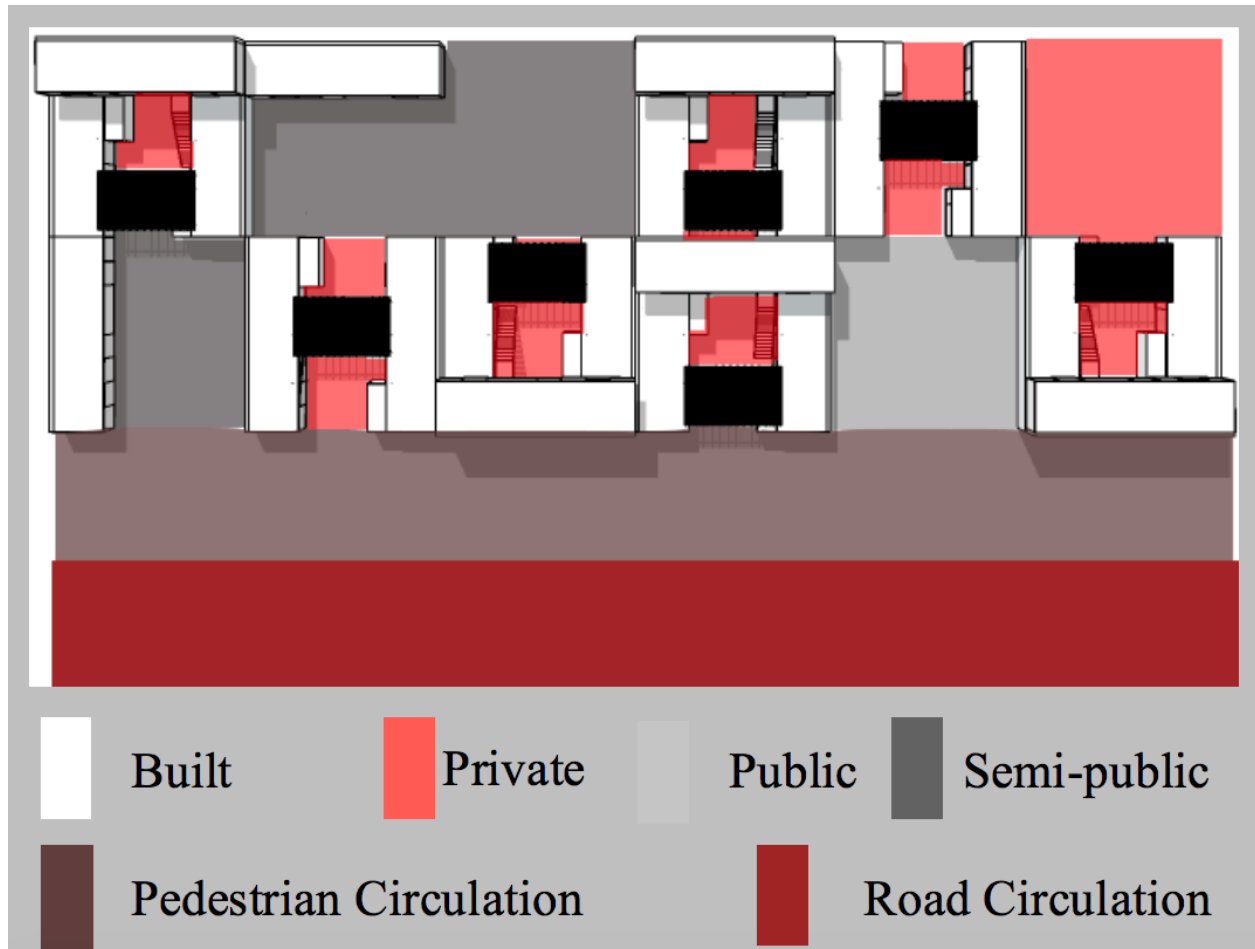


A block parallel to the circulation above the base cell;



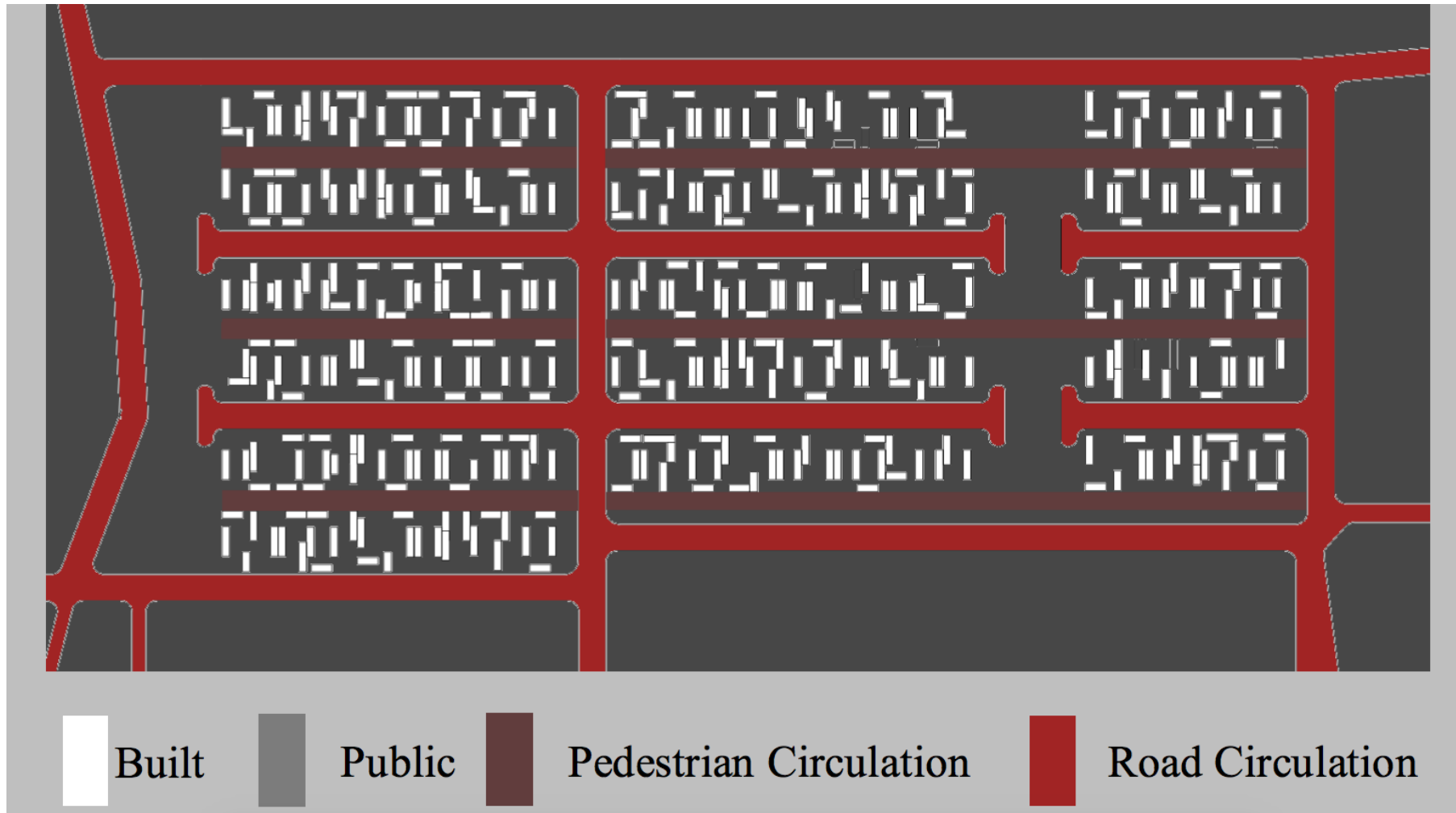
Base cell perpendicular to the circulation, retreated on the field.

5. RELATIONS BETWEEN UNITS AND PUBLIC SPACE



Despite that the House in Luanda generates a pattern where it is possible to configure patios, the privacy of these is dependent on the neighbouring lot configuration.

5. RELATIONS BETWEEN UNITS AND PUBLIC SPACE



In Brasília, the interior of the quarter doesn't exist.

The way the units are displayed in the field allows several walking routes.

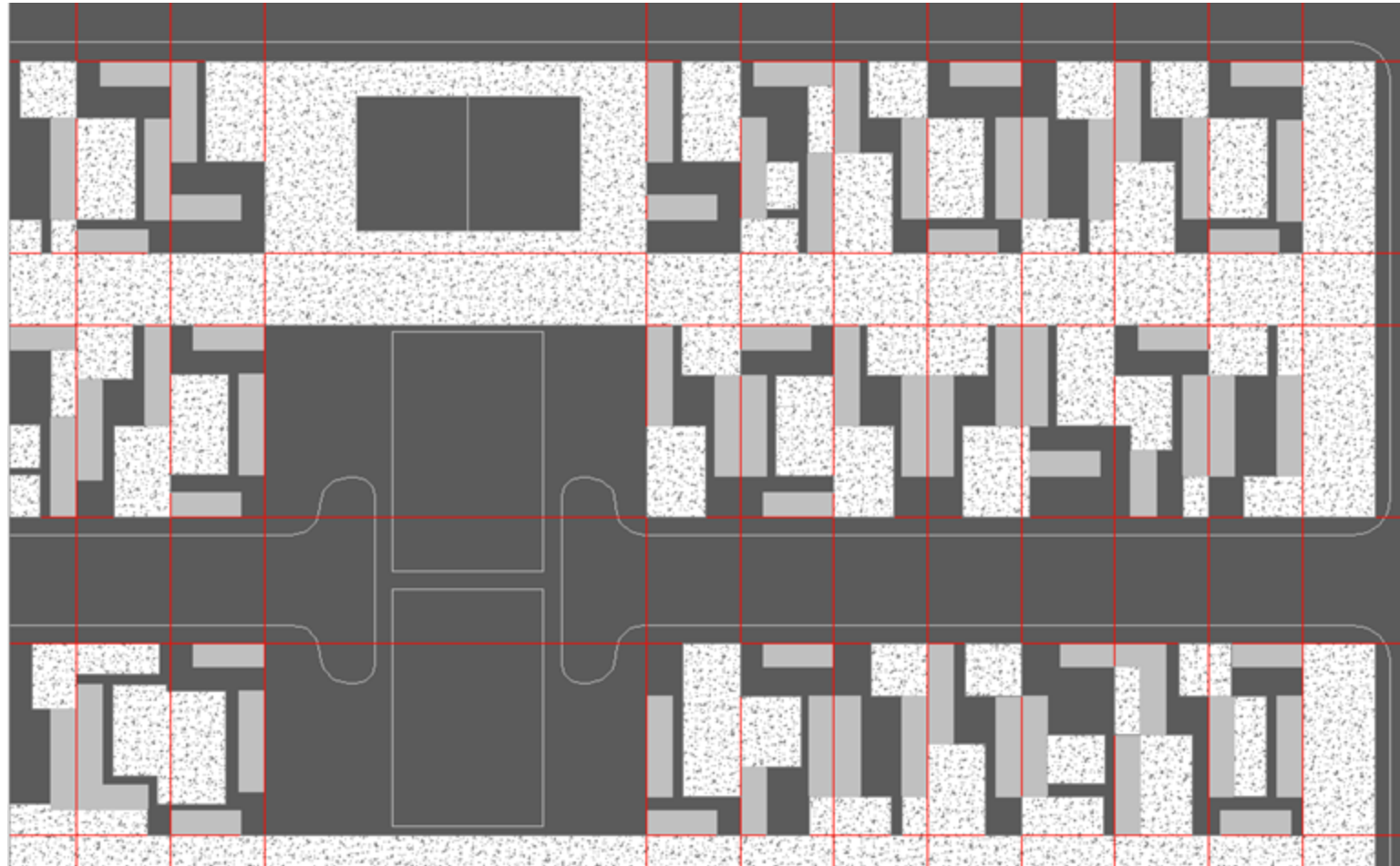
Green Housing in Brasília (2011)

5. RELATIONS BETWEEN UNITS AND PUBLIC SPACE



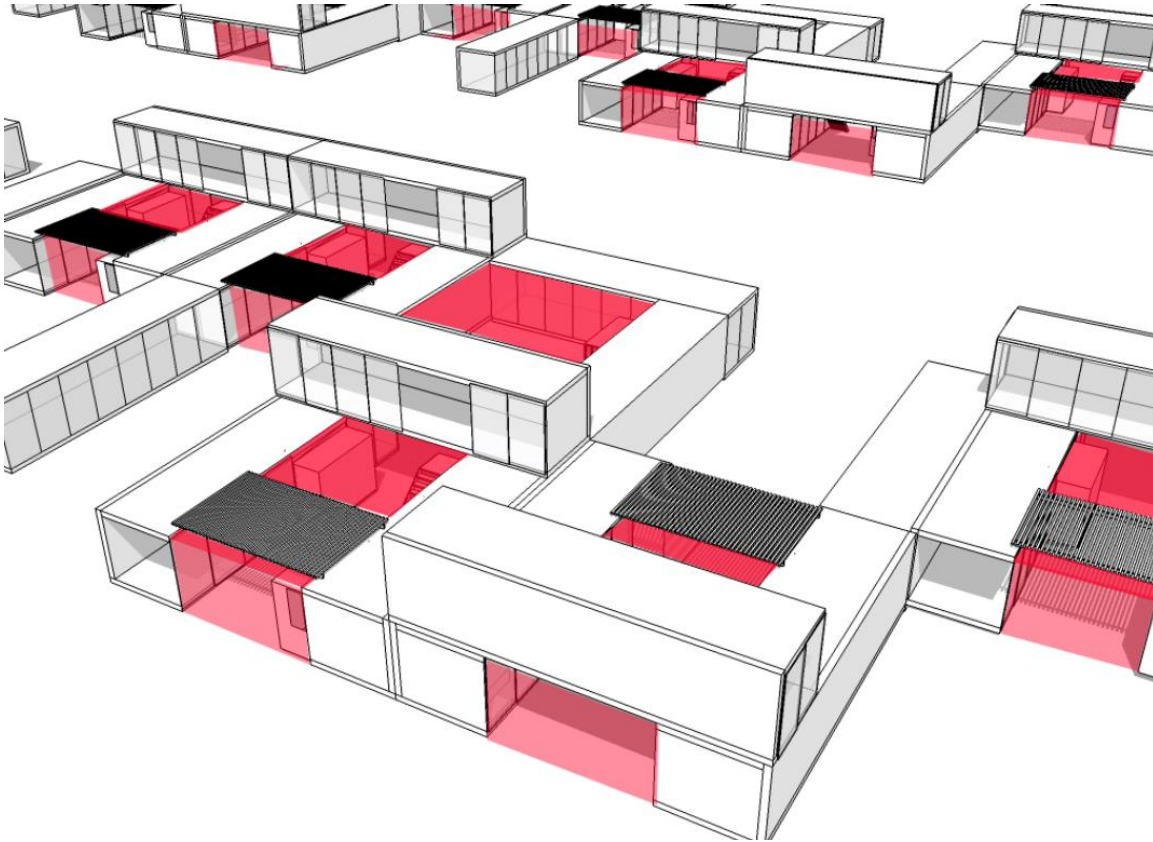
Green Housing in Brasília (2011)

5. RELATIONS BETWEEN UNITS AND PUBLIC SPACE



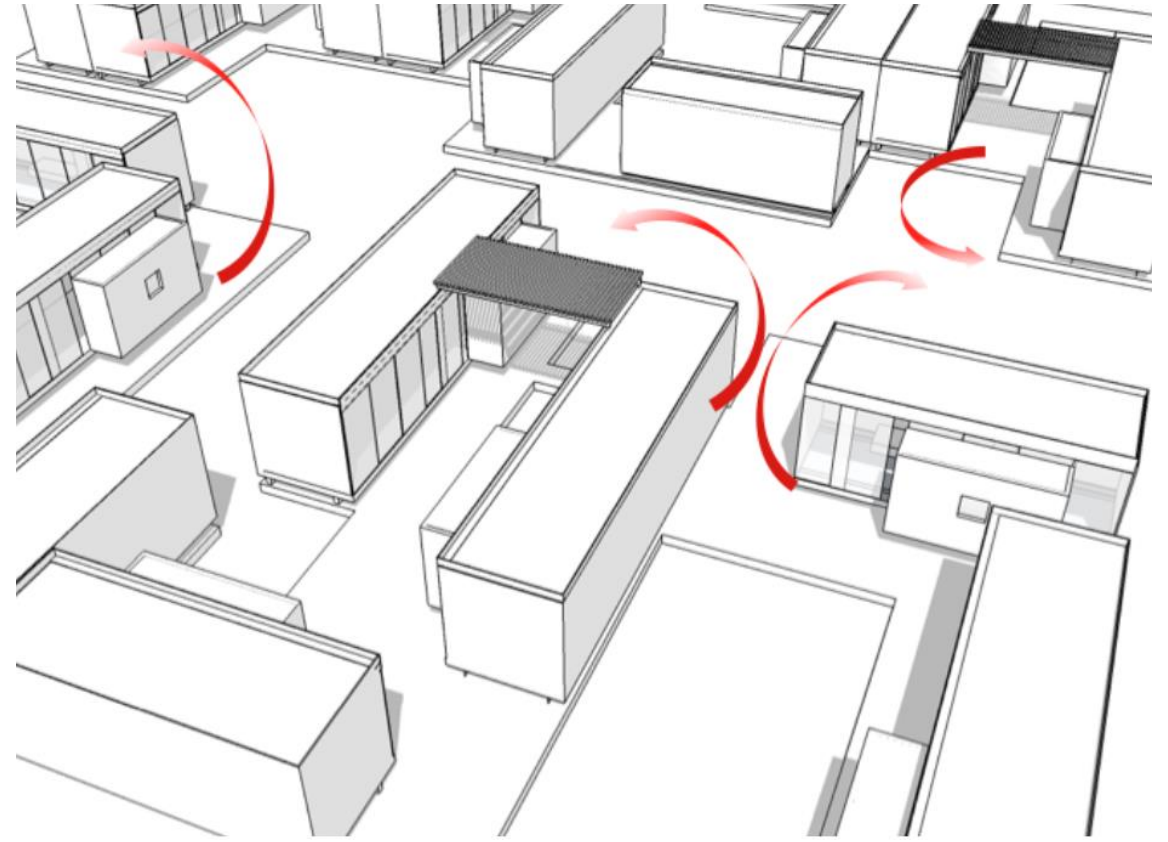
Green Housing in Brasília (2011)

5. RELATIONS BETWEEN UNITS AND PUBLIC SPACE



House in Luanda (2010)

In Luanda, the units tend to close themselves



Green Housing in Brasília (2011)

In Brasília, the public and private spaces blends.

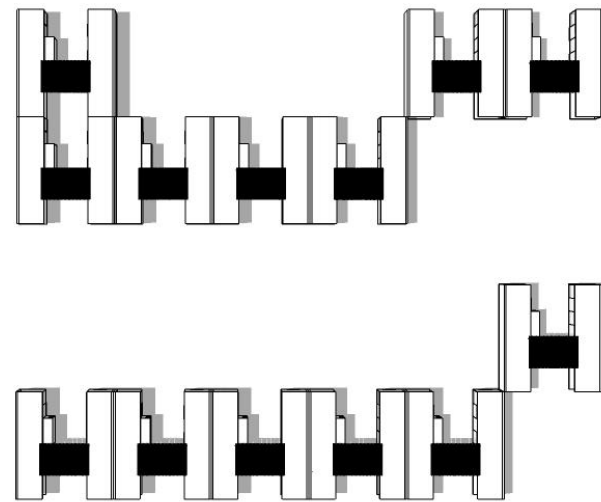
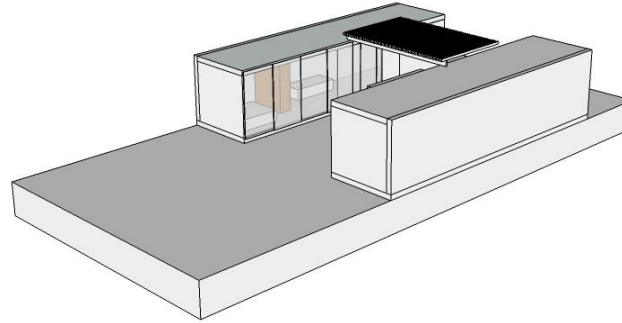
6. FINAL CONSIDERATIONS

In Luanda the positioning of the units on the ground creates courtyards that, although open, configure intimate spaces;

In Brasília is the ideal of community that is valued.

One should take into consideration that these two projects start from the same base, but the problems they propose to answer are distinct.^[1] Still, we can consider that there is an evolutionary process from Luanda to Brasília, if we consider that Brasília breaks the rigidity of the modulation, winning in spatiality in the unit, and in flexibility in urban terms.

House in Luanda (2010)



Green Housing in Brasília (2011)

